

Esztergom-Danube bend CDR

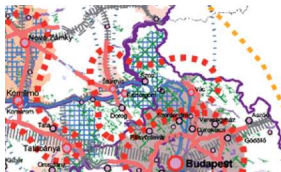
Márton Lendvay
ERDF PP 7- SASD
02 02 2011
Budapest

Jointly for our common future

- The area of the CDR – territorial bordering
- History of cooperation – a traditionally area of cooperation?
- Introduction of the area – a few aspects
- Often seen and key measures
- Summary

Jointly for our common future

Territory



- Policentric region (Esztergom, Sturovo, Visegrád, Vác)
- Situated between Budapest and Levice/Nitra
- Built up in cross sections of at least 3 NUTS 3 regions – mainly Hungary
- Compilation of different regions (industry, recreation/tourism, commuting area)

Territory

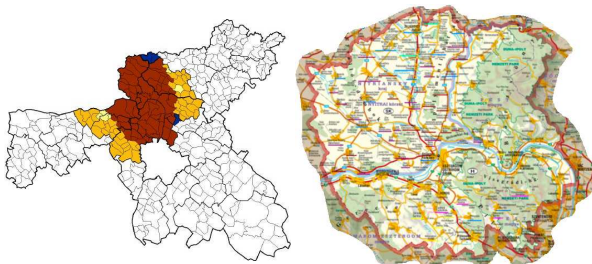


Questions raised:

- Does it have one real centre?
- Overlap with agglomeration?
- Are there available data?

- Policentric region (Esztergom, Sturovo, Visegrád, Vác)
- Situated between Budapest and Levice/Nitra
- Built up in cross sections of at least 3 NUTS 3 regions – mainly Hungary
- Compilation of different regions (industry, recreation/tourism, commuting area)

A traditional area for cooperation?

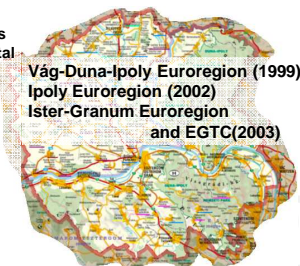


Traditional area of cooperation

Dunakanyar Térségi Fejlesztési Tanács
Dunakanyar Önkormányzati Kerekasztal
Dunakanyar Civil Szövetség
Dunakanyar Környezeti Tanács

Microregions:
• Esztergom
• Dorog
• Pilisvörösvár
• Szob
• Vác
• Szentendre

Vág-Duna-Ipoly Euroregion (1999)
Ipoly Euroregion (2002)
Ister-Granum Euroregion
and EGTC(2003)



SOUTH EAST EUROPE
Transnational Cooperation Programme

Traditional area of cooperation

Dunakanyar Önkormányzati Kerekasztal
Dunakanyar Civil Szövetség
Dunakanyar Környezeti Tanács
Dunakanyar Térségi Fejlesztési Tanács

Vág-Duna-Ipoly Euroregion (1999)
Ipoly Euroregion (2002)
Ister-Granum Euroregion (2003)

Small regions:
• Esztergom
• Dorog
• Pálfiavörösvár
• Szentendre
• Vác

High number of existing studies, development documents!

SOUTH EAST EUROPE
Transnational Cooperation Programme

Introducing the area

SOUTH EAST EUROPE
Transnational Cooperation Programme

Introducing the area

Esztergom, Sturovo area and Danube-bend belong to each other

Vác and the western bank are handled separately

SOUTH EAST EUROPE
Transnational Cooperation Programme

A few aspects

Residential areas...
...and pace of population growth (1990-2005)

SOUTH EAST EUROPE
Transnational Cooperation Programme

A few aspects

Dorog:
Holcim cement,
Power station,
Zoltek plastic

Esztergom:
Suzuki

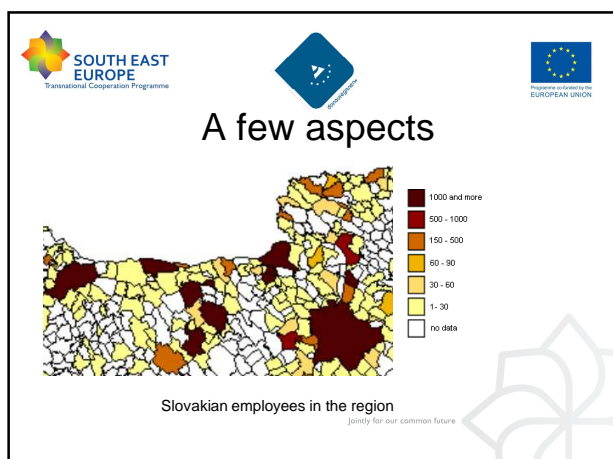
Vác:
Duna-Dráva Cement,
Forte,
GE,
IBM

Industrial and „mixed” zones

SOUTH EAST EUROPE
Transnational Cooperation Programme

A few aspects

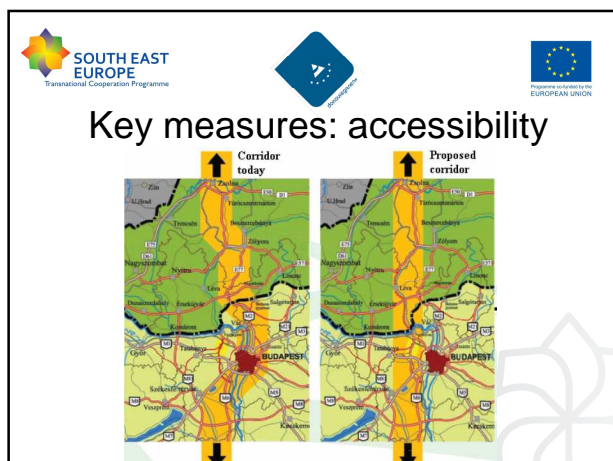
Rate of inhabitants with university degree



SOUTH EAST EUROPE
Transnational Cooperation Programme

Key measures: accessibility

- M11 highway (proposed)
- Vác Danube bridge
- Freight ferry Esztergom-Sturovo
- Ports (freight and yacht)
- Ipoly bridges
- P+R
- Bicycle routes



SOUTH EAST EUROPE
Transnational Cooperation Programme

Key measures: local industry, cooperation, tourism

Measures connected to the Danube-bend and Visegrád

- Tourism based on wine production – wine route
- Danube bend tourism destination

Social support

- Common H-SK public utility services
- Integrated health care system

SMEs, cross border integration

Local products etc.

Jointly for our common future

SOUTH EAST EUROPE
Transnational Cooperation Programme

Summary

- A very diverse CDR
- Sturovo-Vác region - new
- Long lasting history in cooperation – how successful are they?...
- Serious overlap with the agglomeration/BMA
- Tourism and industry are main factors in the CDR

Jointly for our common future