

SOUTH EAST EUROPE
Transnational Cooperation Programme

EUROPEAN UNION

General scheme NATURAL CONDITIONS

1st Workshop - of the DONAUREGIONEN+ project
– Introductory and methodology workshop –
15th and 16th July 2009
Senec, Slovak Republic
Monika Lachmannová

Jointly for our common future

SOUTH EAST EUROPE
Transnational Cooperation Programme

EUROPEAN UNION

Basic Issues and Attitudes

Main conception:
To analyse the level of the **impact of stress factors-limits** (air, soil, water pollution, erosion, living environment destruction) on the **natural potential**

2

SOUTH EAST EUROPE
Transnational Cooperation Programme

EUROPEAN UNION

Basic Issues and Attitudes

Elements which affect the nature in positive way – **NATURAL POTENTIAL**

- protected areas and NATURA 2000
- forest complexes
- water supplies

Elements which affect the nature in negative way – **STRESS FACTORS**

- sources of pollution (water, soil, air and landfills)
- load level of urbanisation in the territory

15th-16th July, 2009 1st Workshop, Senec 3

Jointly for our common future

SOUTH EAST EUROPE
Transnational Cooperation Programme

EUROPEAN UNION

GIS data structure

Division of factors:

- **Land use**
 - represented by the CORINE Land Cover
- **Nature conservation and landscape protection**
 - Protected areas with „national importance“, NATURA 2000, Sites with international significance (sites which was stated according to the international conventions)
 - Territorial system of ecological stability or NECONET
- **Water management**
 - Watercourse, Lake, Water management protected area, Buffer zone
 - Drinking Water Resources, Water supply reservoirs, Water withdrawal from surface streams over 10 l.s-1, Utilized underground water sources, Thermal, mineral water and spas
- **State of the environment**
 - Pollution sources – atmosphere, water and waste

15th-16th July, 2009 1st Workshop, Senec 4

Jointly for our common future

SOUTH EAST EUROPE
Transnational Cooperation Programme

EUROPEAN UNION

GIS data collection

| Legend | Drinking Water Resources | Water supply reservoirs | Water withdrawn from surface streams over 10 l.s-1 | Utilized underground water sources | Thermal, mineral water and spas | Watercourse | Lake | Water management protected area | Buffer zone | River | Geothermal well |
|--|--------------------------|-------------------------|--|------------------------------------|---------------------------------|-------------|------|---------------------------------|-------------|-------|-----------------|
| Green: occurrence in the area, data available | X | X | X | X | X | X | X | X | X | X | X |
| Yellow: occurrence in the area, data not available | | | | | | | | | | | |
| Orange: occurrence in the area, no data sheet | | | | | | | | | | | |
| Red: it is not represented in the area | | | | | | | | | | | |
| White: no data | | | | | | | | | | | |
| Grey: no data | | | | | | | | | | | |

15th-16th July, 2009 1st Workshop, Senec 5

Jointly for our common future

SOUTH EAST EUROPE
Transnational Cooperation Programme



EUROPEAN UNION

Indicators - result

- Land use**
 - complete data
- Nature conservation and landscape protection**
 - Sufficient data
- Water management**
 - Insufficient data – water pollution sources, water management protected area
- State of the environment**
 - Insufficient data – pollution sources, waste management

15th-16th July, 2009 1st Workshop, Senec 6

Jointly for our common future



Results and outputs

Whole issue consists of:

- **Text part involving following information:**
 - general characterization of the whole area of interest
 - separate characterizations of individual countries in the field of nature conservation and landscape protection, water management and state of the environment
- **Graphical part involving following:**
 - Individual graphical schemes made by the division of the factors in scale 1: 3 000 000 and 1: 250 000

Identify for our common future

15th-16th July, 2009 1st Workshop, Senec 7

Results and outputs

Graphical representation of the whole area of interest in 2 scales

- 1: 3 000 000 in format A3 (420x297 mm)
- 1: 1 250 000 in format A1(840x594 mm)

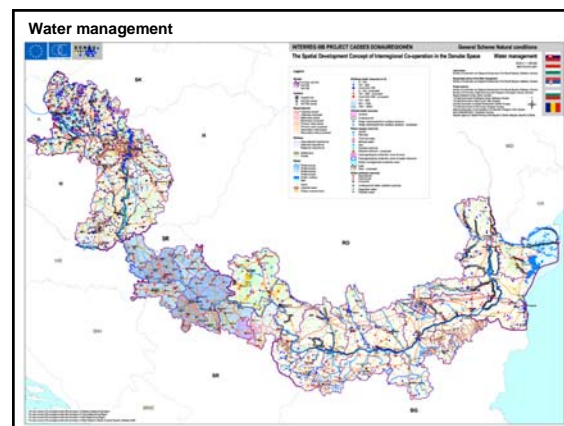
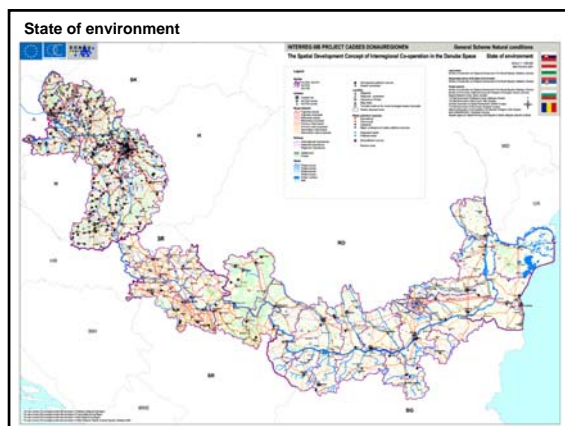
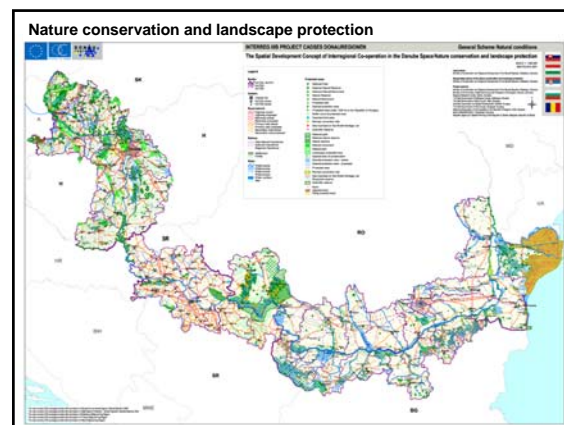
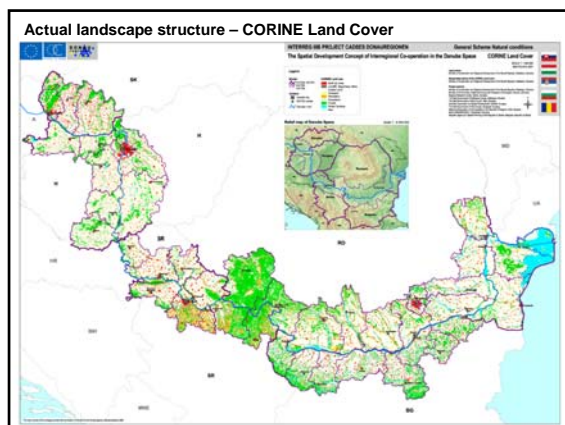
MAPS:

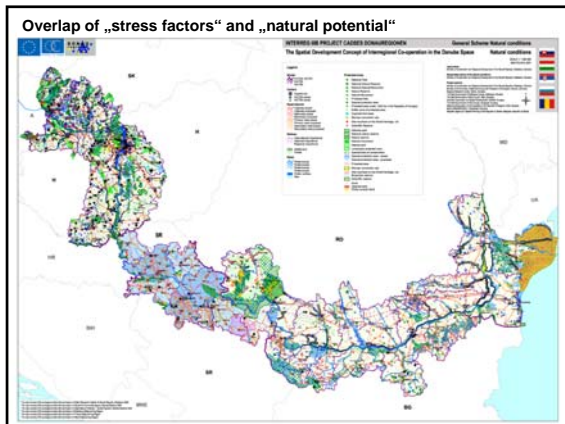
Individual maps will be creating according to the division of the factors:

- Land use
- Nature conservation and landscape protection
- Water management
- State of the environment
- Overlap of the „natural potential“ and „stress factors“

Identify for our common future

8





SOUTH EAST EUROPE
Transnational Cooperation Programme

Summary environmental condition assessment

The objective of the evaluation:

- to express the character of **mutual relations** between the **elements of natural potential** and the **stress factors**
- to **define entities** with different intensity of territorial and ecological loads

Interpreted load – interval from 0 up to -100 points, divided into 5 classes:

- I. Class (0 to -20) – *high standard environment*
- II. Class (-20 to -40) – *convenient environment*
- III. Class (-40 to -60) – *ambivalent environment*
- IV. Class (-60 to -80) – *troubled environment*
- V. Class (-80 to -100) – *strongly troubled environment*

14

SOUTH EAST EUROPE
Transnational Cooperation Programme

... Next step

- modify existing indicators structure if necessary
- update existing GIS data if necessary
- complete missing data if possible
- update report if necessary
- GIS data collection according to methodology
- prepare report according to existing division of chapters

15th-16th July, 2009 1st Workshop, Senec 15

SOUTH EAST EUROPE
Transnational Cooperation Programme

Thank you for your attention.

15th-16th July, 2009 1st Workshop, Senec 16