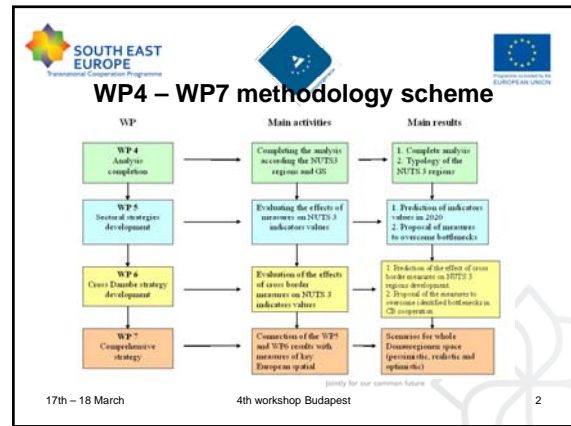


SOUTH EAST EUROPE
Transnational Cooperation Programme

Final methodology framework (WP4 – WP7)

4th Workshop - of the DONAUREGIONEN+ project
17th and 18th March 2010
Budapest, Hungary

17th – 18 March 4th workshop Budapest



SOUTH EAST EUROPE
Transnational Cooperation Programme

WP 4 main activities and results

	Main activities	Main results
WP4	Analysis of NUTS 3 regions	1. Report of analysis of all NUTS 3 regions according the 4 GS 2. Description of the each NUTS 3 region according the 4 GS on web portal 3. Current values of chosen indicators
	Ranking of the NUTS 3 regions	1. Calculated relative weighted values of indicators (x values) 2. Ranking of the regions according the particular indicators (relative weighted values)
	Typology of the regions	The regions will be divided into different groups according the similar characteristics, based on indicator values (relative weighted values)

17th – 18 March 4th workshop Budapest

SOUTH EAST EUROPE
Transnational Cooperation Programme

WP 5 main activities and results

	Main activities	Main results
WP5	Identification and summary of the relevant development documents and its measures	List of relevant documents and measures
	Assignment of the measures to the particular indicators	Set of (selected) indicators with assigned measures
	Evaluation of effect of the measures on indicators	Future relative weighted values of the indicators according the measures and probability – a basis for scenarios development
	SWOT analysis regarding the effects of the measures	Identified future bottlenecks (weaknesses, threats) which are not covered by the proposed measures
	Creating scenarios and strategies for NUTS 3 regions	Set of proposed measures and programmes to overcome identified bottlenecks

17th – 18 March 4th workshop Budapest

SOUTH EAST EUROPE
Transnational Cooperation Programme

WP 6 main activities

	Main activities	Main results
WP6	Definition of CDRs according the model of time accessibility from centres of CDR	Defined areas of all 21 CDRs
	Identification of relevant stakeholders	Established working groups of stakeholders and experts for each CDR which will define strategy for CDR
	Identification of relevant documents, measures and projects with focus on cross border linkages	List of relevant documents, measures and projects
	Assignment of the measures and projects to the particular indicators	Set of (selected) indicators with assigned measures
	Quantification of the effect of cross border measures and projects on NUTS 3 region	Relative weighted values of NUTS 3 indicators as a result of the cross border measures effects
	SWOT analysis regarding the cross border linkages	Identified bottlenecks of cross border cooperation
	Identification of development scenario and strategy creation	Defined scenario according the results of SWOT, the strategy consisting of new measures to overcome bottlenecks
Evaluation of proposed measures on NUTS 3 indicators values	Relative weighted values of NUTS 3 indicators as a result of proposed measures (effect of cross border cooperation measures on whole NUTS 3 region)	

17th – 18 March 4th workshop Budapest

SOUTH EAST EUROPE
Transnational Cooperation Programme

WP 7 main activities

	Main activity	Main result
WP 7	Connection of the WP5 and WP6 results with measures of key European spatial development documents	Scenarios for whole Donauregionien space (pessimistic, realistic and optimistic)

17th – 18 March 4th workshop Budapest