




WP4 – GS Natural Conditions

5th Workshop - of the DONAUREGIONEN+ project
 2nd and 3rd June 2010
 Bucharest, Romania

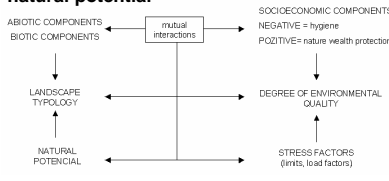
Jointly for our common future




Basic Issues and Attitudes

Main conception:

To analyse the level of the **impact of stress factors-limits** (air, soil, water pollution, erosion, living environment destruction) on the **natural potential**






Jointly for our common future

Structure of General scheme Natural Conditions

- **Land use**
 - represented by the CORINE Land Cover or cadaster data
- **Nature conservation and landscape protection**
 - Protected areas with „national importance“, NATURA 2000, Sites with international significance (sites which was stated according to the international conventions)
 - Territorial system of ecological stability or NECONET
- **State of the environment**
 - Air pollution, Water pollution, Waste management
- **Water management**
 - Basic information of Water management

Jointly for our common future




Land use

Important categories of Land use:

- **Farmland**
- **Arable land**
- **Forest**
- **Water surface**
- **Built-up area**

- categories in table according to NUTS3 regions

Jointly for our common future








Nature conservation and landscape protection

National network of protected areas

- nature conservation and landscape protection is in individual state very different
- better evaluate according category IUCN (International Union for Conservation of Nature)
 - Ia - Strict Nature Reserve
 - Ib - Wilderness Area
 - II - National Park
 - III - Natural Monument
 - IV - Habitat/Species Management Area
 - V - Protected Landscape/Seascape
 - VI - Managed Resource Protected Area

Jointly for our common future

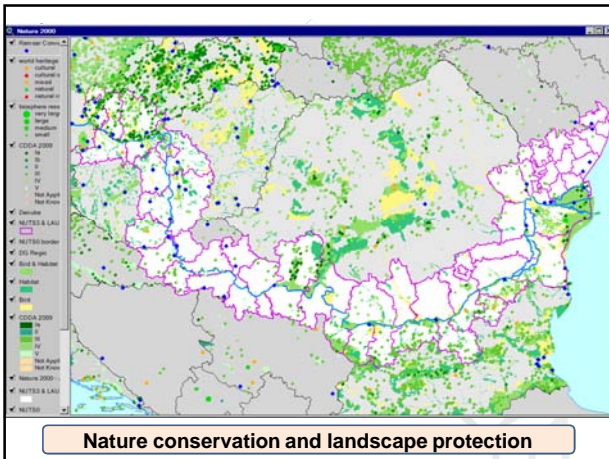




Nature conservation and landscape protection

NATURA 2000

- areas with high interest for European Community
 - Birds Directive (Spatial Protection Areas – SPA)
 - Habitats Directive (Special Areas of Conservation – SAC)
- NATURA 2000 do not supply National network of protected areas
- **Areas registered as Ramsar Convention Sites**
- **World Heritage (UNESCO)**
- **Man and the Biosphere (MAB)** and others
- **Territorial system of ecological stability** (only text part)

Jointly for our common future



SOUTH EAST EUROPE
Transnational Cooperation Programme

State of the environment

Sections:

- Air quality and pollution
- Water pollution
- Waste

Air quality and pollution

Water pollution

Waste

stress factors

Justly for our common future

SOUTH EAST EUROPE
Transnational Cooperation Programme

State of the environment

Sections:

- **Air quality and pollution**
 - emissions of the elementary air pollutants according to the NUTS 3 (PM, SO₂, NO₂, CO)
 - the most important air pollution producers in individual counties
- **Waste**
 - number of landfills
 - waste generation in individual counties and other ...

SOUTH EAST EUROPE
Transnational Cooperation Programme

State of the environment

Water pollution

1. Water Quality classes according to NUTS3

- basic elements of water pollutions
- 5 quality classes: I – very clean water
- II – clean water
- III – polluted water
- IV – heavily polluted water
- V – extremely heavily polluted water

2. Water Frame Direction (2000/60/EC)

- Biological quality elements,
- Hydromorphological quality elements
- Physico-chemical quantity elements

NUTS 3 region	Watercourse	Sampling site	A	B	C	D	E	F
Bratislavský	Dunaj	Karlova Ves	2	3	3	2	4	5
	Dunaj	Bratislava ľavý breh	2	3	3	3	4	5
	Dunaj	Bratislava stred	2	4	3	3	4	5
	Dunaj	Bratislava pravý breh	2	3	3	3	4	5
	Modranské rameno	Státna hranica	2	2	2	3	4	1
	Malina	Jakubov	5	2	5	4	4	4
	Mikša	Pod Devínskou Novou Visou	4	3	5	3	4	4
	Dunaj	Rajka	2	3	2	2	4	1
	Dunaj	Medvedov	2	2	2	3	3	4
	Mýjava	Dojč	3	3	4	2	4	4
Trnavský	Mýjava	Kolty	3	3	4	3	4	4
	Váh	Hlohovec	2	2	2	3	4	1
	Trnávka	Madravica	4	3	4	4	5	4
	Dolný Dudvah	Sládkovičovo	4	4	5	4	5	5
	Malý Dunaj	Jelka	2	2	4	3	3	4
	Canál Gabčíkovo Topoľníky	Rutinky	4	3	4	2	4	4
	Dunaj	Komárno (stred)	2	3	3	3	4	5
Nitriansky	Dunaj	Sturove	1	2	2	3	3	4
	Bebrava	Krušovoce	3	3	4	4	5	4
	Nitra	Nitrianska Streda	3	4	4	4	4	5
	Nitra	Luzánky	3	4	4	4	5	5
	Nitra	Čechynice	4	4	4	5	5	4
	Záhorská	Pod	2	4	4	4	4	4
	Malá Nitra	Pod Súreňmi	4	4	5	4	5	4
	Nitra	Komňa	4	4	5	4	4	4
	Hron	Kalná nad Hronom	3	2	3	3	4	4
	Hron	Kamenica	2	2	3	3	4	4
	Váh	Selice	2	2	2	3	3	5
	Váh	Komárno	2	2	3	4	4	4
	Malý Dunaj	Kolárovo	1	3	3	3	3	4

SOUTH EAST EUROPE
Transnational Cooperation Programme

Water management

- the main legal basis is represented by the Water Frame Directive
- surface and groundwater are to be considered together, in both qualitative and quantitative terms
- achieve good ecological and chemical status and contribute to mitigating the effects of floods

Justly for our common future

SOUTH EAST EUROPE
Transnational Cooperation Programme

State of environment – text part

Country		State	Webportal
Slovakia	update text	OK	update
Hungary	update text	partially	update
Romania	update text	OK	update
Bulgaria	update text	-	update
Serbia	update text	OK	update
Croatia	new text	-	update
Moldavia	new text	OK	update
Ukraine	new text	-	update

Jointly for our common future

SOUTH EAST EUROPE
Transnational Cooperation Programme

Quantification of Environmental problems

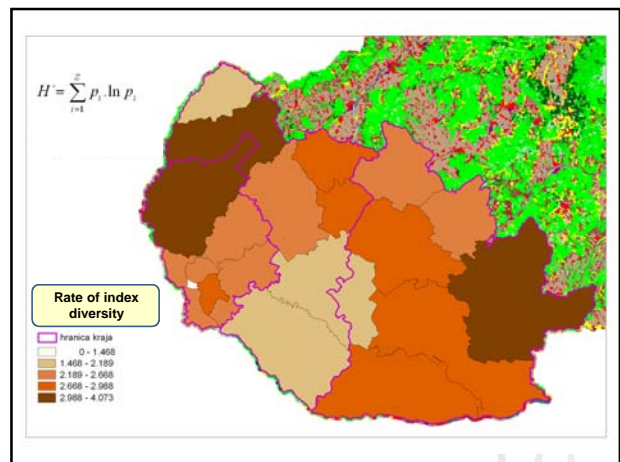
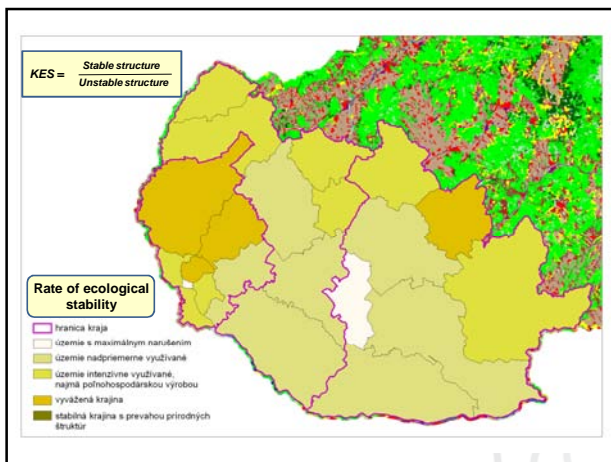
- Basic Source: Corine Landcover
 - three time levels: 1990, 2000, 2006
 - equivalent methodics of data processing
- Calculation of land change for time levels
 - for example: change of abundance forest

arable land
urban fabric
and others

Environmental and ecological problems

rate of ecological stability, diversity of landcover

Jointly for our common future



SOUTH EAST EUROPE
Transnational Cooperation Programme

Thank you for your attention.

Jointly for our common future