

SOUTH EAST EUROPE
Transnational Cooperation Programme

**CASE STUDY ON WPS5
SECTORAL STRATEGY
Odessa Region
Izmail district**

**ONPU
10% PP2**

Jointly for our common future

SOUTH EAST EUROPE
Transnational Cooperation Programme

For the case study of one NUTS III unit the **Izmail district** of Odessa region was chosen.

Izmail district was founded in 1954.

The Administrative center of the district is Izmail city.

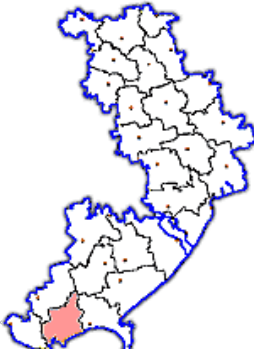
Distance from the center of the district to the Odessa city is 260 km.

Izmail district is situated at the south of the Odessa region and occupies 119,4 thousand ha.

The district consists of 22 settlements.

The population of the district numbers 52,3 thousand inhabitants.

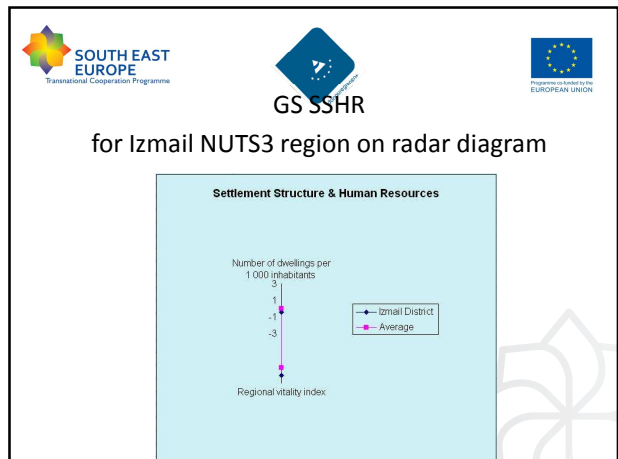
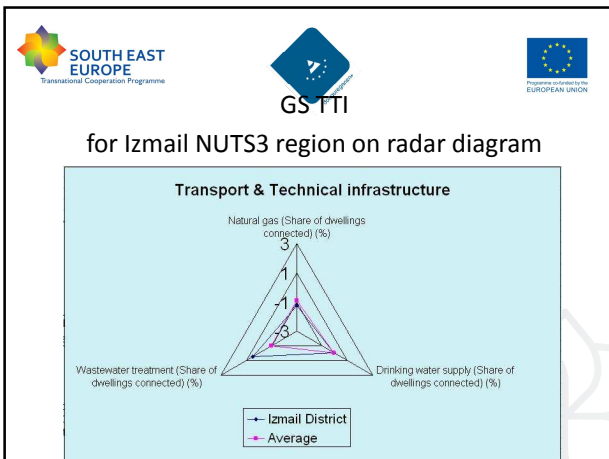
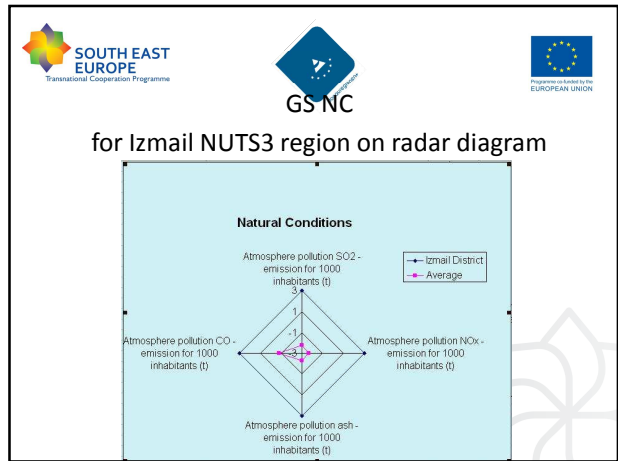
Izmail Trade River Port plays a very important role as it is situated on the Western-European transport artery – Danube river.

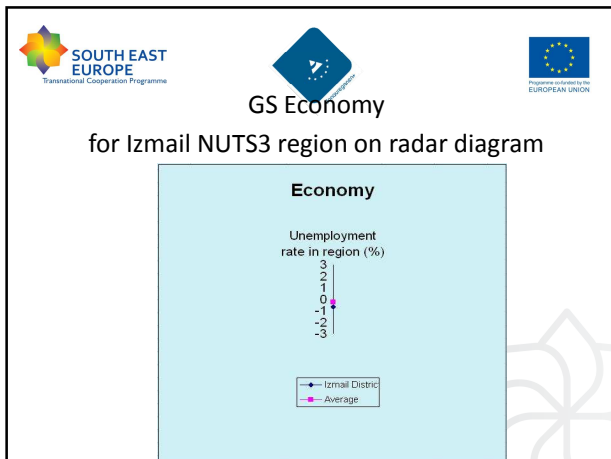


SOUTH EAST EUROPE
Transnational Cooperation Programme

The X values of Izmail district

Indicator	X value	Average X of the Danube regions	Bennett Index
Natural Conditions			
Atmosphere pollution SO ₂ - emission for 1000 inhabitants (t)	3,00	-2,24	100,00
Atmosphere pollution NO _x - emission for 1000 inhabitants (t)	3,00	-2,34	
Atmosphere pollution ash - emission for 1000 inhabitants (t)	3,00	-2,31	
Atmosphere pollution CO - emission for 1000 inhabitants (t)	3,00	-0,83	
Settlement Structure & Human Resources			
Number of dwellings per 1 000 inhabitants	-0,45	0,02	88,45
Regional vitality index	-2,05	1,16	
Transport & Technical infrastructure			
Natural gas (Share of dwellings connected) (%)	-1,27	-0,88	52,15
Drinking water supply (Share of dwellings connected) (%)	-0,05	-0,07	
Wastewater treatment (Share of dwellings connected) (%)	0,50	-0,99	
Economy			
Unemployment rate in region (%)	-0,69	-0,26	41,82





Predicted changes until 2020
according to value Y and Strategic development measures

- Strategic development is descriptive, existing forecasts and planning indicators are only for the whole region.
- There are no specific data for the separate districts.

Jointly for our common future

- Having analyzed the official document of Odessa Regional Council "Strategy of Economic and Social Development of Odessa Region for the Period till 2015" of November 2006, #91-V we concluded that strategic measures **are not**:
 - defined in the time period,
 - quantity estimated,
 - measurable.

For example the measure addressing the GS Economy indicator "Unemployment rate in the region" is described in following way:

"...The positive impact on reducing of the unemployment rate of the region will have the supporting activities of the priority directions of the region development, use of the health resort potential and tourist sphere, increasing of the level and range of services, further development of the new routs of the green ecological tourism..."

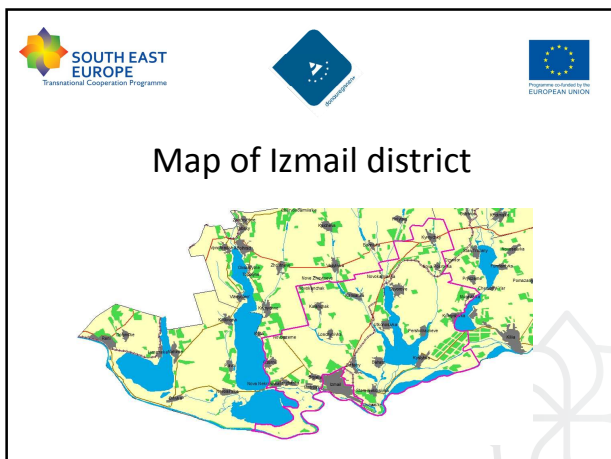
Jointly for our common future

Proposal

For the solving of above mentioned problems and further elaborating strategy development plans we propose to conduct

Local Strategy Building Meetings
with the district administrations' representatives and local stakeholders.

Jointly for our common future



Thank You
for Your
Attention!

Jointly for our common future