


## WP5 in the Donauregionen+ project

Márton Lendvai  
ERDF PP 7- SASD  
02.06.2010  
Bucharest


Jointly for our common future



## Work for WP5

- Introduction
- Why is groupwork needed?
- Task of partners
- Results achieved – questions – further findings


Jointly for our common future



## Task of partners for Bucharest

- Collection of data for WP4 & WP5
- Collection of documents
- Selection of measures
- Probability of these measures


Jointly for our common future



## Work for WP5

- Indicators to be used
- 1. Value „X”
- 2. Document analysis
- 3. Value „Y”
- 4. Proposed measures & Scenarios
- Results achieved


Jointly for our common future



## Methods

Method	Work Package			
	WP4	WP5	WP6	WP7
<b>Sociological methods</b>				
SWOT analysis	xxx	xxx	xxx	x
Document analysis	x	xxx	xx	x
Personal interview		x	xx	x
Focus group		xx	xx	
Case study		x	x	
Personal observation				
Expert team	x	xxx	xxx	xx
Questionnaire				
Delphi method				
Benchmarking				xxx
<b>Parametrizing, exact methods</b>				
Mapping	xx	x	xx	xx
GIS	xx	x	xx	x
X-Y	x	xxx		xx
Cost-benefit analysis				
Shir-share analysis				
Regression analysis				
Factor analysis				
Input-output model				
Econometric model				

Jointly for our common future



## Data - Indicators of the impact of measures

- For the 4 general schemes:
  - Natural conditions
  - Settlement Structure & Human Resources
  - Transport & Technical infrastructure
  - Economy
- Different from those of WP4

Jointly for our common future

**SOUTH EAST EUROPE**  
Transnational Cooperation Programme

**Natural conditions**

General scheme	Indicator	Description
Natural Conditions	Water pollution Index	an index (formula) for water pollution evaluation will be developed
	Atmosphere pollution SO <sub>2</sub> - emission in tons for 1000 inhabitants	Atmosphere pollution will be evaluated as an emission for 1000 inhabitants in the region
	Atmosphere pollution NO <sub>x</sub> - emission in tons for 1000 inhabitants	
	Atmosphere pollution ash - emission in tons for 1000 inhabitants	
	Atmosphere pollution CO - emission in tons for 1000 inhabitants	
Landfills	capacity of landfills per 1000 inhabitants	

Jointly for our common future

**SOUTH EAST EUROPE**  
Transnational Cooperation Programme

**Settlement Structure and Human Resource**

General scheme	Indicator	Description
SBHR	Number of dwellings per 1 000 inhabitants	Number of dwellings in the region per 1000 inhabitants
	Number of university students per 1 000 inhabitants	Number of university students studying in the region per 1000 inhabitants
	Regional vitality index	Ratio of preproductive and postproductive inhabitants

Jointly for our common future

**SOUTH EAST EUROPE**  
Transnational Cooperation Programme

**Transport and Technical infrastructure**

General scheme	Indicator	Description
Transport	Road Transport – Density of Highways	length of highways per km square
	Railway Transport – Density of Railways	length of total railway network per km square
	Water Transport - freight transferred	freight transferred through ports in the region compared with the GDP national/GDP regional ratio per 1000 inhabitants
	Water Transport - accessibility of ports	share of region area accessible from ports within radius of xx km
	Air Transport – airports accessibility	share of region area which is located within 80 km radius around (TEN-T airport)
Technical infrastructure	Electric energy supply	Share of dwellings connected
	Natural gas	Share of dwellings connected
	Broadband (internet)	Share of dwellings connected
	Drinking water supply	Share of dwellings connected
	Wastewater treatment	Share of dwellings connected
Renewable energy sources	Capacity of regional renewable energy sources in MW per 1000 inhabitants	

**SOUTH EAST EUROPE**  
Transnational Cooperation Programme

Formula:  $[(Value_i - Value_{min} / Value_{max} - Value_{min}) - 0,5] * 6$

**The -3 - +3 relative scale**

**Number of Average guest nights (1000)**

**SOUTH EAST EUROPE**  
Transnational Cooperation Programme

**Document analysis**

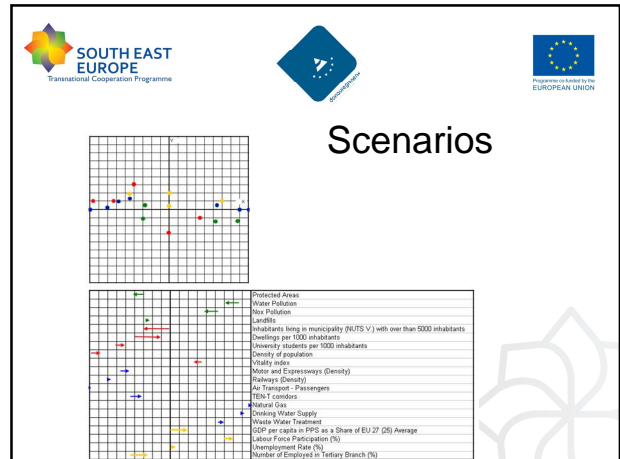
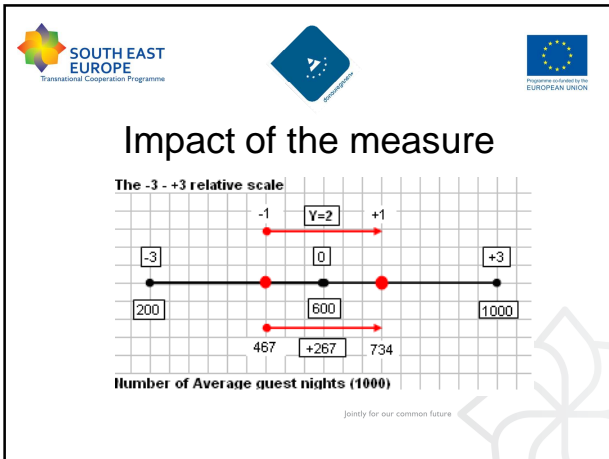
- NUTS 0, 1, 2, 3 level documents
- Other sectoral documents
- Trends etc.

Jointly for our common future

**SOUTH EAST EUROPE**  
Transnational Cooperation Programme

**Measures – expert estimations**

- Selection of **relevant** measures
- Rules for probability:
  - **Juridical** (EU requirements, national scale requirement such as law)
  - **Financial** (budget allocation, obtainable financial amount)
  - **Technical** (state of preparation, existing plans, documentation)
- all 3 factors, the probability is 100% - Ycurrent(100%)
- 2 factors, the probability is 75% - Ya(75%)
- 1 factor, the probability is 50% - Yb(50%)
- 0 factor, the probability is 25% - Yc(25%)
- 0 factor, and the measure is not well established and is unrealistic, the probability is 0 and the measure is not taken into account further on

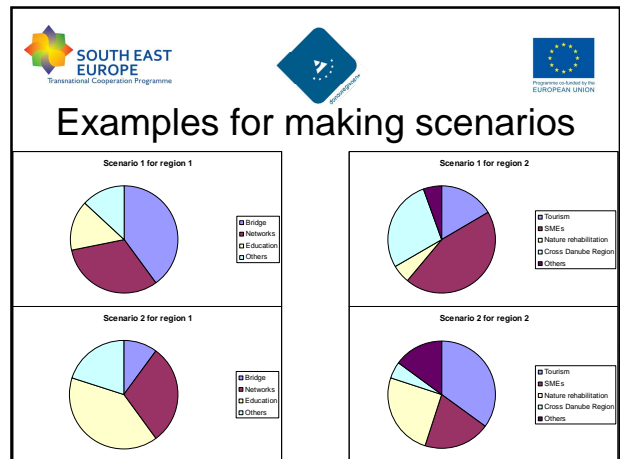
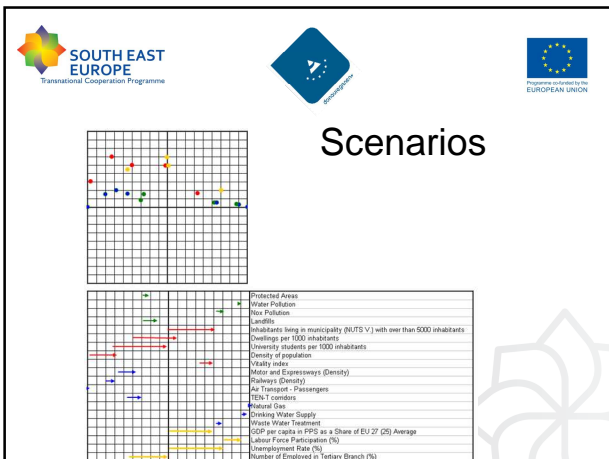


- 
- Proposed measures**
- Stakeholder meeting:
    - Expert team
    - Local, regional government
    - NGOs
    - Entrepreneurs
  - SWOT analysis – proposal of measures and programs connected to existing objectives
  - Expert estimation: the impact of these proposed measures
- Jointly for our common future

**Exemple for Programs and objectives**

Programs	Objectives						
	The region specific objective: Prosperous region in a logistic area						
	Life quality		Economic competitiveness				
	Better environment		Lower production costs		Higher productivity		Better adaptation
	State of natural conditions	Accessibility, connectivity	Water reserving capacity, irrigation	SME Co-operation	Attractiveness of tourism	Qualification	Labor force
<b>Education</b>							
Vocational training				x	x	x	x
Languages				x		x	x
<b>Water management</b>							
Water reservoir	x		x				
Canal lines	x	x	x				
Osovo lake rehabilitation	x						
<b>Organizational development</b>							
Tourism Destination Management organization				x	x		
Development clusters				x			
<b>Transport infrastructure</b>							
Bridge		x					
Railways		x					
Logistic centres		x		x			
<b>Cross Danube Region</b>		x		x	x		x

Jointly for our common future

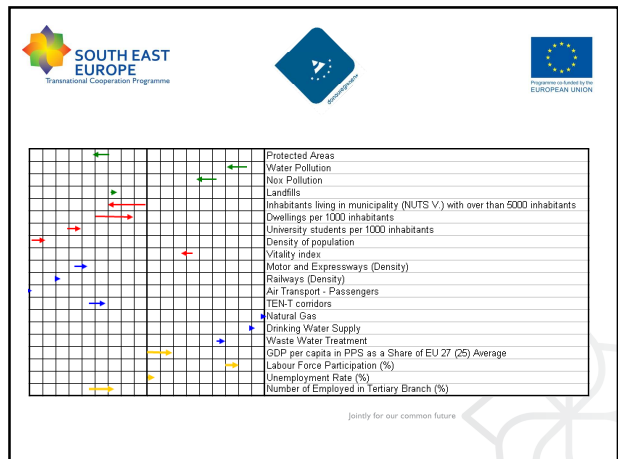


**SOUTH EAST EUROPE**  
Transnational Cooperation Programme

**Value X**

- SWOT analysis

<p><b>Strength</b></p> <ul style="list-style-type: none"> <li>•Infrastructure</li> <li>•Transnational enterprises</li> <li>•Industrial parks</li> <li>•Euroregions</li> </ul>	<p><b>Weakness</b></p> <ul style="list-style-type: none"> <li>•Few bridges over Danube</li> <li>•Few ports</li> <li>•Tourism (attractions)</li> <li>•Utilization Danube</li> </ul>
<p><b>Opportunity</b></p> <ul style="list-style-type: none"> <li>•Cross-border cooperation</li> <li>•Shipping</li> <li>•Ecology</li> </ul>	<p><b>Threat</b></p> <ul style="list-style-type: none"> <li>•Many organizations</li> <li>•Unharmonized development actions for our common future</li> </ul>



**SOUTH EAST EUROPE**  
Transnational Cooperation Programme

**Objectives**

The region specific objective: Prosperous regions in a logistic area

Programs	Life quality		Economic competitiveness				
	Better environment		Lower production costs	Higher productivity	Better adaptation		
	State of natural conditions	Accessibility, connectivity	Water reserving capacity, irrigation	SME Co-operation	Attractiveness of tourism	Qualification	Labor force
<b>Education</b>							
Vocational training				x	x	x	x
Languages				x		x	x
<b>Water management</b>							
Water reservoirs	x		x				
Canal lines	x	x	x				
Oldlow lake rehabilitation	x						
<b>Organizational development</b>							
Tourism Destination Management organization				x	x		
Development clusters				x			
<b>Transport</b>							

Jointly for our common future