

**SOUTH EAST EUROPE**  
Transnational Cooperation Programme

**WP3 – GIS & Maps**

Ing. arch. Aleš Baláží

Workshop 9, Varna, 1. – 2.6.2011

Jointly for our common future

**SOUTH EAST EUROPE**  
Transnational Cooperation Programme

**WP3 – Geographical Information System**

- Orgware – Non-formal working group for GIS
- Methodology of how to build GIS and the Structure of Geographical Database
- Applications – ArcGIS Desktop and ArcGIS Server

Workshop 9, Varna, 1. – 2.6.2011

Jointly for our common future

**BASIC PRINCIPLES**

**GENERAL SCHEME – SETTLEMENT STRUCTURE AND HUMAN RESOURCES**

**SETTLEMENT STRUCTURE**

Field Name	Field Type	Field Length	Field Description
COORD	Double	8	Coordinate system number
NTSR	Character	2	NTSR code according to European (ISO 3166-2)
NTSR	Character	2	NTSR code according to European (ISO 3166-2)
NTSR	Character	12	NTSR name according to European (ISO 3166-2)

**NTSR Boundary – Layer data structure**

Field Name	Field Type	Field Length	Field Description
COORD	Double	8	Coordinate system number
NTSR	Character	2	NTSR code according to European (ISO 3166-2)
NTSR	Character	2	NTSR code according to European (ISO 3166-2)
NTSR	Character	12	NTSR name according to European (ISO 3166-2)

**GENERAL SCHEME – SETTLEMENT STRUCTURE AND HUMAN RESOURCES**

**SETTLEMENT STRUCTURE**

Field Name	Field Type	Field Length	Field Description
COORD	Double	8	Coordinate system number
NTSR	Character	2	NTSR code according to European (ISO 3166-2)
NTSR	Character	2	NTSR code according to European (ISO 3166-2)
NTSR	Character	12	NTSR name according to European (ISO 3166-2)

**NTSR Boundary – Layer data structure**

Field Name	Field Type	Field Length	Field Description
COORD	Double	8	Coordinate system number
NTSR	Character	2	NTSR code according to European (ISO 3166-2)
NTSR	Character	2	NTSR code according to European (ISO 3166-2)
NTSR	Character	12	NTSR name according to European (ISO 3166-2)

**SOUTH EAST EUROPE**  
Transnational Cooperation Programme

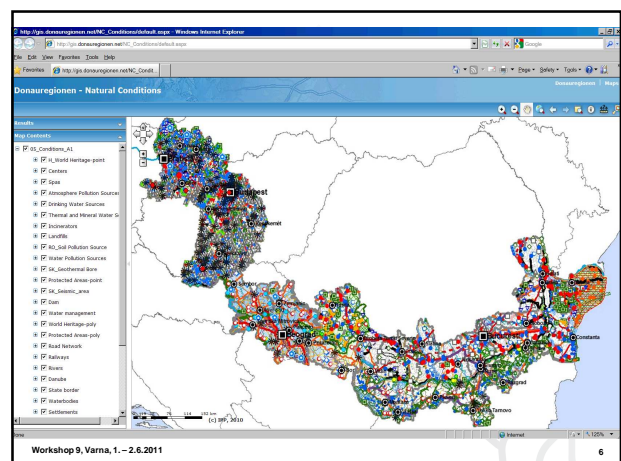
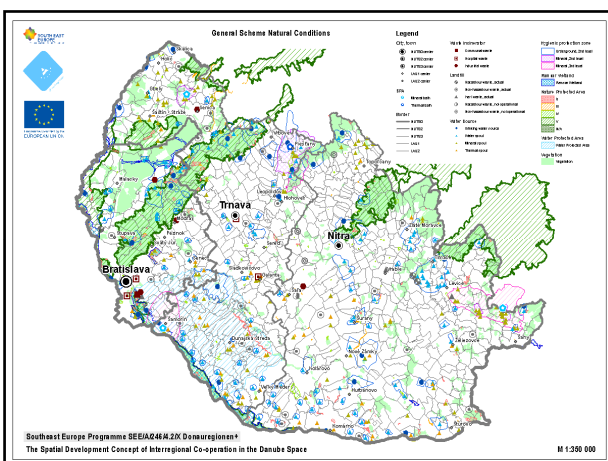
**Applications for GS and platforms**

- Natural Conditions – former 5 maps
- Settlement Structure and Human Resources – former 4 maps
- Settlement Structure and Human Resources – former 9 maps
- Transport and Technical Infrastructure – former 4 maps
- Transport and Technical Infrastructure – former 4 maps
- Economy – No maps

- ArcGIS Desktop – Applications for GS and Set of maps for project reports
- ArcGIS Server – Public and dynamic access to present all relevant layers

Workshop 9, Varna, 1. – 2.6.2011

Jointly for our common future



**SOUTH EAST EUROPE**  
Transnational Cooperation Programme

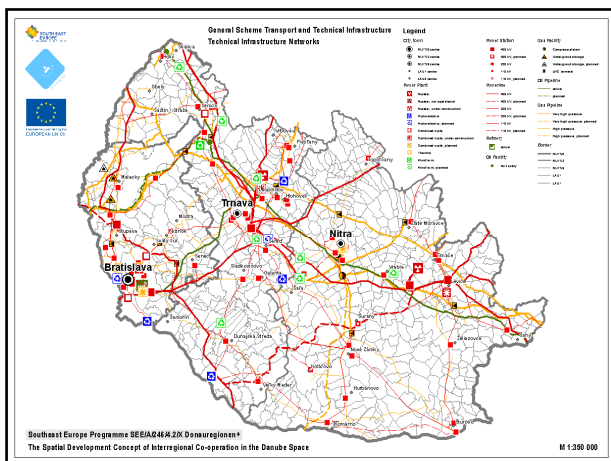
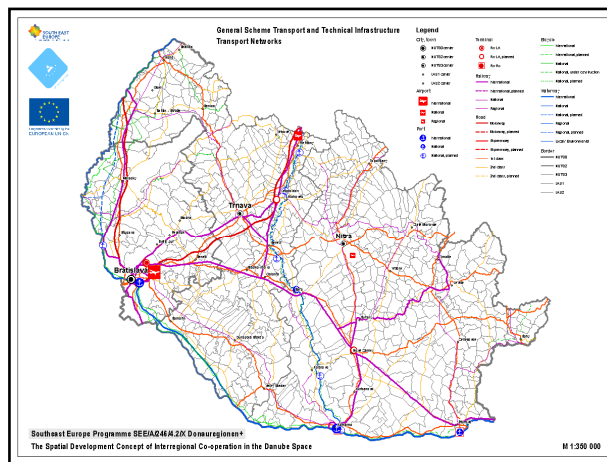
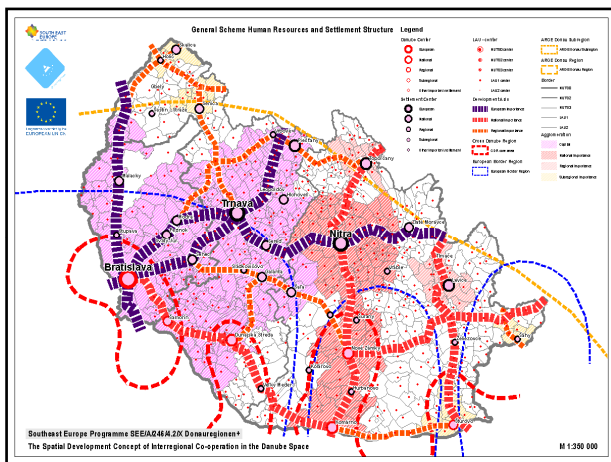
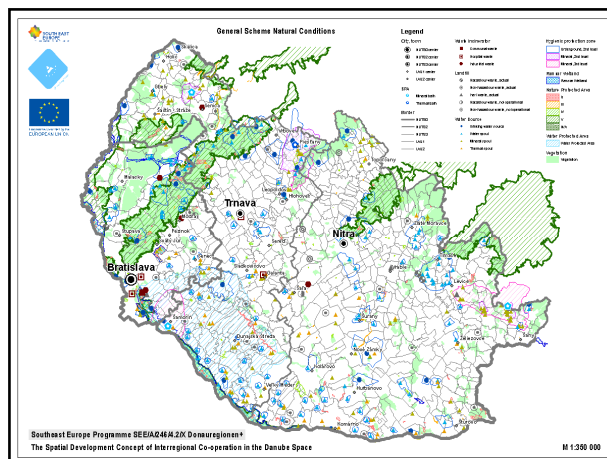
## Maps and Work packages

- **WP4 & WP5** – Common set of maps for each NUTS3 region (up to 200 maps)
- **WP6** – Set of maps for each CDR (up to 40 maps)
- **WP7** – Set of maps for ArgeDonauLander (5 maps)

- National Coordinate system / ETRS 1989
- Scale from 1:200 000 up to 1:400 000
- Each NUTS3 region / Logical union of NUTS3 regions
- Format A2

Workshop 9, Varna, 1. – 2.6.2011

7



**SOUTH EAST EUROPE**  
Transnational Cooperation Programme

**Thank you for your attention and patience as well,**

**Have a nice day**

Workshop 9, Varna, 1. – 2.6.2011

12