

# DONAUREGIONEN+



## The Spatial Development Concept of Interregional Cooperation in the Danube Space

### 9<sup>th</sup> Workshop Report

Elaborated by ERDF PP8, LP  
National Association of Municipalities in the Republic of Bulgaria, Sofia  
Ministry of Transport, Construction and Regional Development of the Slovak Republic

June 2011

Jointly for our common future



## Table of content

1. Introduction.....	3
2. Workshop preparation .....	3
3. Course of workshop .....	3
4. Course of Workshop and summary report .....	6
4.1. Opening and introduction .....	6
4.2. Transnational project management and coordination – ADMAN rules of the project and progress of WP2 .....	6
4.3. Progress of the WP3 .....	6
4.4. Progress of the WP5 .....	6
4.5. Progress of the WP6 and WP7 .....	7
4.6. Working in Group Nr. 1 .....	7
5. Conclusions and recommendation of 9 <sup>th</sup> Workshop.....	8
6. Conclusions of 7 <sup>th</sup> Meeting of the Project Steering Committee .....	11
7. Annexes (presentations & reports) .....	12-37



# 1. Introduction

The ninth workshop of the Donauregionen + - The Spatial Development Concept of Interregional Co-operation in the Danube Space, aims to present the current state of the various semi-finished Work Packages (WP), with an emphasis on project work within WP5 - Sectoral Strategy Development and WP6 – Cross-Danube Strategy Development, held on 31<sup>st</sup> May – 3<sup>rd</sup> June 2011 in Varna, Bulgaria. Venue of the workshop was the Hotel Melia Grand Hermitage. On the workshop were presented, discussed and adopted concrete materials, which modify the next process of the project.

## 2. Workshop preparation

### 2.1. Confrontations with project partners

The aim of the 9<sup>th</sup> workshop was to discuss about the current status of the project, to solve the issues of each running work packages as to discuss about the next work of each project partner.

## 3. Course of workshop

**Date:** 1st June 2011, Wednesday, 9,00-15,30 hours – 1st Day

**Place:** Hotel Melia Grand Hermitage – 1 Alley, Golden Sands, Varna 9007, Bulgaria

*08,30 – 09,00 – Registration*

1. *09,00 – 09,10 – **Opening***  
+ Opening (welcome word, objectives and tasks of the workshop) – ERDF PP8, LP
2. *09,10 – 09,20 – **WP 1 - ADMAN report***  
+ Presentation – LP  
+ Without Discussion
3. *09,20 – 09,30 – **How the workshop will be organised – The new form/way of the workshop***  
+ Presentation – ERDF PP1  
+ Without Discussion
4. *9,30 – 9,40 – **WP2 – Present Status, Goals for the Workshop and Organisation of the Working Group (points of discussion)***  
+ Presentation – ERDF PP1  
+ Discussion – LP and PPs
5. *9,40 – 9,50 – **WP3 – Present Status, Goals for the Workshop and Organisation of the Working Group (points of discussion)***  
+ Presentation – ERDF PP1  
+ Discussion – LP and PPs

6. **9,50 – 10,00 – WP5 – Present Status, Goals for the Workshop and Organisation of the Working Group (points of discussion)**  
+ Presentation – ERDF PP7  
+ Discussion – LP and PPs
7. **10,00 – 10,10 – WP6 – Present Status, Goals for the Workshop and Organisation of the Working Group (points of discussion)**  
+ Presentation – ERDF PP1  
+ Discussion – LP and PPs
8. **10,10 – 10,20 – WP7 – Present Status, Goals for the Workshop and Organisation of the Working Group (points of discussion)**  
+ Presentation – ERDF PP1  
+ Discussion – LP and PPs

*10,20 - 10,45 – Break 1*

9. **10,45 – 12,45 – Working in Group Nr. 1 – rotation after 30 minutes!**  
+ Working Group 1 – WP3 – GIS Data (“correct and topological”) – moderated by ERDF PP1  
+ Working Group 2 – WP5 – Sectoral Strategy Development – moderated by ERDF PP7  
+ Working Group 3 – WP6 – Cross-Danube Strategy Development – moderated by ERDF PP1  
+ Working Group 4 – WP7 – Comprehensive strategy – moderated by ERDF PP1

*12,45 - 13,45 – Break 2*

10. **13,45 – 15,45 – Working in Group Nr. 2 – rotation on next day in WG Nr. 3!**  
+ Working Group 1 – WP5 – Sectoral Strategy Development – moderated by ERDF PP7  
+ Working Group 2 – WP6 – Cross-Danube Strategy Development – moderated by ERDF PP1  
+ Working Group 3 – WP7 – Comprehensive strategy – moderated by ERDF PP1

*15,45 - 16,00 – preparation time for 7<sup>th</sup> PSC Meeting*

11. **16,00 – 16,30 – 7<sup>th</sup> meeting of the Project Steering Committee**  
+ Participation – only PSC members

*16,30 – End of the 1<sup>st</sup> Day*

**Date: 2nd June 2011, Thursday, 9,00-16,45 hours – 2nd Day**

**Place: Hotel Melia Grand Hermitage – 1 Alley, Golden Sands, Varna 9007, Bulgaria**

*08,30 – 09,00 – Registration*

12. **9,00 – 11,00 – Working in Group Nr. 3 – rotation on next WG Nr. 4!**  
+ Working Group 1 – WP5 – Sectoral Strategy Development – moderated by ERDF PP7  
+ Working Group 2 – WP6 – Cross-Danube Strategy Development – moderated by ERDF PP1  
+ Working Group 3 – WP7 – Comprehensive strategy – moderated by ERDF PP1

*11,00 - 11,15 – Break 3*



13. **11,45 – 13,15 – Working in Group Nr. 4**

- + Working Group 1 – WP5 – Sectoral Strategy Development – moderated by ERDF PP7
- + Working Group 2 – WP6 – Cross-Danube Strategy Development – moderated by ERDF PP1
- + Working Group 3 – WP7 – Comprehensive strategy – moderated by ERDF PP1

*13,15 – 14,15 – Break 4 (+ preparation for Plenary Session 2)*

14. **14,15 – 14,30 – WP2 – Results of Working Group, Proposals for CAR**

- + Presentation – ERDF PP1
- + Discussion – LP and PPs

15. **14,30 – 14,45 – WP3 – Results of Working Group, Proposals for CAR**

- + Presentation – ERDF PP1
- + Discussion – LP and PPs

16. **14,45 – 15,00 – WP5 – Results of Working Group, Proposals for CAR**

- + Presentation – ERDF PP7
- + Discussion – LP and PPs

17. **15,00 – 15,15 – WP6 – results of Working Group, Proposals for CAR**

- + Presentation – ERDF PP1
- + Discussion – LP and PPs

18. **15,15 – 15,30 – WP7 – Results of Working Group, Proposals for CAR**

- + Presentation – ERDF PP1
- + Discussion – LP and PPs

*15,30 – 16,00 – Break 5 (preparation of conclusions)*

19. **16,00 – 16,30 – Task force, Deadlines, Responsibilities**

- + Presentation – LP and ERDF PP1
- + Without Discussion

20. **16,30 – 16,45 – Closing of the 9<sup>th</sup> Workshop**

- + Closing words – ERDF PP8

*16,45 – End of the 9<sup>th</sup> Workshop*

## 4. Course of Workshop and summary report

### 4.1. Opening and introduction

The ninth workshop of the Donauregionen + project was opened by Deputy Mayor of Varna Municipality Kosta Bazitov. He wished to all involved project partners successful and useful discussion. After that Tibor Németh, representative of LP, welcomed all participants and opened the works.



### 4.2. Transnational project management and coordination – ADMAN rules of the project and progress of WP2



In this section, in presentation of the representative of Lead Partner (LP) Mrs. Ida Repaska, summarized the progress of administrative and coordination activities, which were made from the previous, 8<sup>th</sup> workshop.

Mrs. Repaska informed the partners on the Partner Report's status for the forth reporting period. The Report has to be submitted to 1<sup>st</sup> of June 2011 till 18.00 p.m. The fifth reporting period is from 1<sup>st</sup> of March till 31<sup>th</sup> of August. The sums for period 3.2 are transferred on 31<sup>th</sup> of May.

The modification of the project (budget changes between the partners) was made on the 17<sup>th</sup> of May.

- 7.800,00 € from ERDF PP1 ISP to ERDF PP7 SASD
- 41.000,00 € from ERDF PP5 SGPC to ERDF PP7 SASD

Regarding WP2, Mrs. Repaska informed about the annual report 2010, which was established and printed. Six national Info Days were organized and the last one, in Bulgaria it will be on the 3<sup>rd</sup> of June.

At the end there was announced the provisional date for the next, 10<sup>th</sup> workshop in Resita, Romania on 21<sup>th</sup>-22<sup>th</sup> of September 2011.

### 4.3. Progress of the WP3

Presentation in this block had Mr. Aleš Baláži (representative of ERDF PP1), who presented the current state of processing.

Mr. Balazi presented the basic requirements for the databases and the maps on the different general schemes. The accessibility model was discussed in details. Concrete examples were presented.

### 4.4. Progress of the WP5

Presentation in this block had Mr. Dienes Tamás – SASD (representative of ERDF PP7), who presented the current state of processing of the WP5. Till this moment all project partners has



finalized the following activities: evaluation of indicators; document analysis and identifying the key measures for all NUTS 3 regions. The work on SWOT (sectoral) and Sectoral evaluation (text) for all NUTS 3 regions, scenarios, synergies of the measures has to be also finalized.

#### 4.5. Progress of the WP6 and WP7

Mr. Ľubomír Macák (representative of ERDF PP1) had a presentation in this block. It was paid attention on the implementation of C&R from 8<sup>th</sup> workshop and its structure was presneted as follows:

- Introduction (goals, schedule and area of interest)
- Premises/inputs and fulfillment
- Preliminary outputs (case study)
- Differences (WP6 vs. WP5 vs. WP4)
- Workshop tasks and organization



Mr. Julius Hanus informed participants of workshop about the tasks associated with the WP7. In his presentation briefly outlined the steps and timetable of work to develop an overall strategy for Danube region.

#### 4.6. Working in Group Nr. 1

In this unit the program was to work in groups. They created four working groups:

Working Group 1 – WP3 – GIS Data (“correct and topological”) – moderated by ERDF PP1

Working Group 2 – WP5 – Sectoral Strategy Development – moderated by ERDF PP7

Working Group 3 – WP6 – Cross-Danube Strategy Development – moderated by ERDF PP1

Working Group 4 – WP7 – Comprehensive strategy – moderated by ERDF PP1

The results of working groups are set out in the Conclusions and Recommendations adopted at the 9<sup>th</sup> workshop.



#### 4.8. 7<sup>th</sup> Meeting of the Project Steering Committee

During the 9<sup>th</sup> Workshop there was held the 7<sup>th</sup> meeting of Project Steering Committee (PSC), on which were discussed administrative matters of the project.

## 5. Conclusions and recommendation of 9<sup>th</sup> Workshop

### WP1 - Transnational Project Management and Coordination

- The 10<sup>th</sup> workshop will be on 21<sup>st</sup> and 22<sup>nd</sup> of September 2011 in Resica, Romania - ERDF PP10.
- Preparation of the 9<sup>th</sup> workshop report will be done till end of July 2011 (ERDFPP8/LP).
- Permanent preparation for project audit with storing of related project documents and outputs on the basis of requests of JTS and Lead Partner – according to the Audit Manual.

### WP2 - Communication and Dissemination

- The Bulgarian National Conference/Info-Day will be on 3<sup>rd</sup> June 2011 - Silistra - ERDF PP8. Participation of LP representative is provided.
- Preparation of National Conference/Info-Day Report by responsible organizers till end of June 2011. Finalization processes will be done by LP. The structure of the report:
  1. main title,
  2. program,
  3. report,
  4. conclusion,
  5. 1-2 photo from Info day.
- Joint ETC (European Transnational Cooperation) Conference will be held on 15<sup>th</sup>-16<sup>th</sup> September 2011 in Poland in Katowice. Participation of LP or PP representative will be provided.

### WP3 - Project Data and GIS Development

- In term of two weeks the ERDF PP1 will continue in completion of the final version of primary data, indicators and formulas for calculation of indicators incl. GIS methodology update of tabular data. This version will be commented further by each GS responsible project partner until the end of June 2011.
- All partners will send the primary data to ERDF PP1 till end of July 2011.
- Send actual version of GIS at present status to ERDF PP1 in one week and continue in finalisation of data according the GIS methodology – on the next workshop the ERDF PP1 will inform – all partners responsible.
- Permanent development of the project D+ Web Server and GIS Server for support of WP4, WP5, WP6 and WP7 – ERDF PP1 till next workshop.
- The GIS Server should be accessible permanently and the maps of all general schemes will be available there.
- The internal communication tools (forum, calendar, file manager) will be permanently developed – ERDF PP1.

- General Schemes coordinators will prepare templates for printouts of maps for WP4 and WP5.

#### WP4 - Analysis Completion

- 14. Proposed deadline for finalizing indicator tables and primary data (with signing data that are calculated from extrapolation, national average or expert estimation) and uploading on Web Portal: end of June 2011. “-3 - +3” scale shall be finalized according to state of existing data of 30<sup>th</sup> June 2011.

#### WP5 - Sector Strategies Development

- For Ukraine and Moldova only one spatial set of indicators and strategy schemes (structures) are required due to low number of accessible (indicators) primary data.
- Proposed deadline for finalizing SWOT analyses (per NUTS3 regions (except for Ukraine and Moldova) per General Schemes) on Web Portal: 25<sup>th</sup> June 2011.
- On the basis of Proposed deadline for creating strategy schemes including identification of measures per region on Web Portal till 15<sup>th</sup> July 2011.
- On the D+ Web Server special form will be created till end of June 2011.

#### WP6 - Crossdanube Strategy Development

- Preparation of Cross-Danube-Strategy (CSD) Workshops Report by responsible organizers till end of June 2011. Finalization processes will be done by LP.
- To the online form WP6 „Analysis“ will be added a possibility for view of data.
- To online form WP6 Analysis can be added new text detailed describing the CDR core area.
- ERDF PP1 will solve the possibility of interconnection between WP6 added measures and WP5 (whether new measure is added into WP6 will affect WP5 indicators value).
- WP6 coordinator put all online forms (Joint SWOT, Joint Strategy, Joint measures) on D+ Web Server till end June 2011.
- Elaboration of WP6 guide v 1.2 is extended till end of June 2011.
- ERDF PP1 will indicate who will be responsible for evaluation of measures in WP6 (with Cross-Danube impact) and how.
- WP6 online form structure of Strategy for CDR was discussed and approved by all PPs is as follow:
  - Global objective,
  - Specific objectives,
  - Priorities,
  - Groups of measures,
  - List of measures.
- WP5 online form Prognosis will be fulfilled till end of July 2011.
- WP6 online form Analytical part (joint description and joint SWOT) will be done till end of September 2011.
- WP6 online form strategically part (joint measures and strategy) will be done till end of November 2011.



#### WP7 - Comprehensive Strategy

- ERDF PP1 will prepare the portal support of elaboration of the National Background Report (NBR) till end of June 2011.
- National Background Reports of the WP7 will be prepared by responsible project partners till next workshop (1st step – Analysis and comparisons) for each ARGE Subregion for each country extended till the next workshop.
- DRAFT National Background Reports of the WP7 will be prepared by responsible project partners till next workshop (2nd step – Scenarios) for each ARGE Subregion for each country extended till the next workshop.
- ERDF PP1 with ERDF PP7 will prepare the methodology of integration of top down and bottom up approaches in scenarios definition till next workshop

## **6. Conclusions of 7<sup>th</sup> Meeting of the Project Steering Committee**

Attended:

1. LP – Tibor Nemeth – Chairman
2. ERDF PP1 – Julius Hanus – SVK
3. ERDF PP5 – Attila Bognar – HU - absent
4. ERDF PP8 – Mariana Nikolova – BG
5. ERDF PP10 – Oana Popescu – RO
6. 10% PP1 – Viorel Miron – MD
7. 10% PP2 – Mariia Tanasenko – UA
8. 10% PP5 – Tijana Zivanovic – SR
9. 10% PP8 – Mariana Balic – CRO

Invited partner: ERDF PP7 – HU

1. The LP presented the final project modification request and all related documents concerning the budget changes - budget reallocation between partners which were officially sent to the JTS on 16<sup>th</sup> May 2011.
2. The PSC approved the all administrative, managing activities incl. the deadlines to the next PSC meeting.
3. The PSC asks the Project Partners to observance all deadlines which are proposed in the conclusion of the 9<sup>th</sup> Workshop.
4. The next regular PSC meeting will be on the next workshop (10<sup>th</sup> WS) in Resita/Romania on 21<sup>st</sup> September 2011.

## **7. Annexes (presentations & reports)**

A – General Processes of the Project – ADMAN

B – WP3 – GIS and Maps

C – WP3 – Accessibility Model

C1 – WP3 – Accessibility Model – Airports

C2 – WP3 – Accessibility Model – Border Crossing Time



C3 – WP3 – Accessibility Model – Ports Time Accessibility

D – WP5 – Present status

E – WP6 – Present Status, Goals and WG Organizations

F – Outputs and WP7



## A - General Processes of the Project - ADMAN

## General Processes of the Project

(Administrative and managing procedures – ADMAN rules, WP1-WP2)  
status from the 01.03.2011 till 01.06.2011 and the following rules



9<sup>th</sup> Workshop - of the DONAUREGIONEN+ project  
1<sup>st</sup> – 2<sup>nd</sup> June 2011  
Varna, Bulgaria  
Tibor Németh, Ida Repaská  
Lead Partner – Ministry of Transport, Construction and Regional Development of the Slovak Republic

## WP1 - Transnational Project Management and Coordination

### Reporting + Validation



- Partner Reports for 4<sup>th</sup> Period (01.9.2010 – 28.02.2011)
- Validation of Expenditures (ERDF PP's – 8 declarations)
- Progress Report for 4<sup>th</sup> Period in finish – today till CET 18.00!
- 5<sup>th</sup> Project Period 01.03.2011– 31.08.2011 in progress
- PR and AfR of 3.2 Period – approved – 17.03.2011!
- Money transfer – 15.04.2011 by JTS and 31.5.2011 by LP

## Transferred amount 31.05.2011

for 3.2 Project Period – 3.2 PR and AfR

• LP – MTCRR	4.577,93
• ERDF PP1 – IPP	94.051,75
• ERDF PP2 – BSGR	3.733,90
• ERDF PP3 – TSGR	1.632,46
• ERDF PP4 – NSGR	15.020,51
• ERDF PP5 – SGPC	13.667,68
• ERDF PP6 – PC-RGNPA	2.341,06
• ERDF PP7 – SASD	14.754,98
• ERDF PP8 – NAMBR	10.274,54
• ERDF PP9 – INCD	9.139,04
• ERDF PP10 – CSCC	497,28



## Project Modification

- Budget Changes Between ERDF PP
- 7.800,00 € from ERDF PP1 ISP to ERDF PP7 SASD
- 41.000,00 € from ERDF PP5 SGPC to ERDF PP7 SASD
- Submitted to JTS on 17.05.2011:
  - Request for project modification (Annex 2)
  - Budget change table
  - Revised Application Form
  - Change-log file
  - New Co-financing statements of the affected Partners
- Decision till 10.06.2011




## WP2 - Communication and Dissemination

- *Publicity Documents - Annual Report 2010*
- *National Conferences/Info Day's*
- *Transnational event – SEE Annual Conference*

## List of National Conferences/Info Days

DATE	PLACE	RESPONSIBLE PP	FROM LP
31.03.2011	Chisinau, Moldova	10%PP1	Tibor, Ida, Melinda
29.04.2011	Bukurest, Romania	ERDF PP9	Ida
04.05.2011	Vukovar, Croatia	10%PP8	Tibor
10.05.2011	Belgrade, Serbia	10%PP5	Melinda
18.05.2011	Dunajská Streda, Slovakia	LP	Tibor, Ida, Melinda
25.05.2011	Odessa, Ukraine	10%PP2	Tibor
03.06.2011	Silistra, Bulgaria	ERDF PP8	Tibor





**Next ADMAN activities**

***10<sup>th</sup> Workshop - DONAUREGIONEN+***




***21.-22. September 2011, Resica, Romania***

***Organizer: ERDF PP10***

Jointly for our common future






## B – WP3 – GIS and Maps



# WP3 – GIS & Maps

Ing. arch. Aleš Baláží

Jointly for our common future



## WP3 – Geographical Information System




- Orgware – Non-formal working group for GIS
- Methodology of how to build GIS and the Structure of Geographical Database
- Applications – ArcGIS Desktop and ArcGIS Server

*Jointly for our common future*

Workshop 9, Varna, 1. – 2.11.2011

2

[illegible]



## Applications for GS and platforms

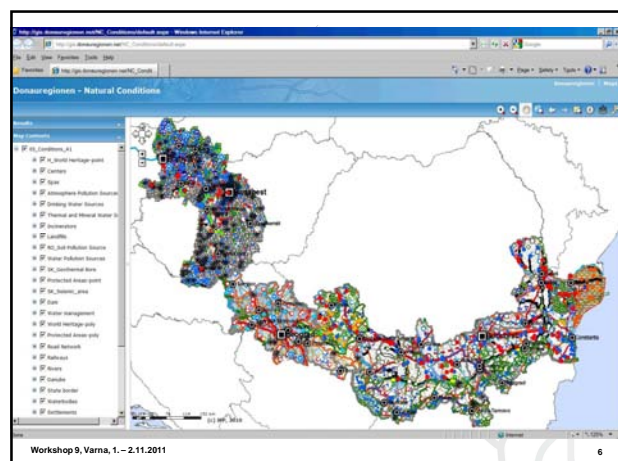
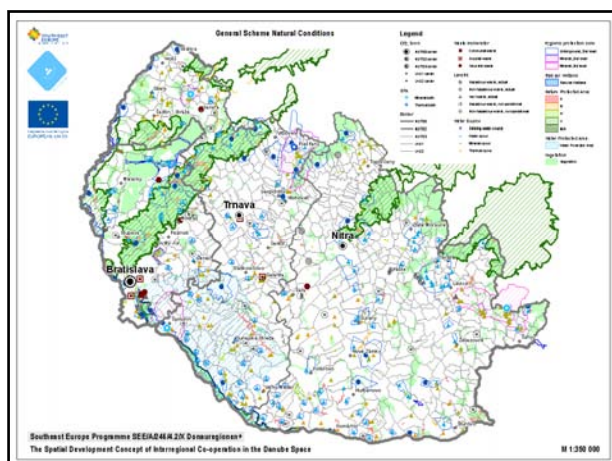
- **Natural Conditions** – former 5 maps
- **Settlement Structure** and **Human Resources** – former 4 maps
- Settlement Structure and **Human Resources** – former 9 maps
- **Transport** and **Technical Infrastructure** – former 4 maps
- Transport and **Technical Infrastructure** – former 4 maps
- **Economy** – No maps



  

- **ArcGIS Desktop** – Applications for GS and Set of maps for project reports
- **ArcGIS Server** – Public and dynamic access to present all relevant layers

*Jointly for our common future*

Workshop 9, Varna, 1. – 2.11.2011



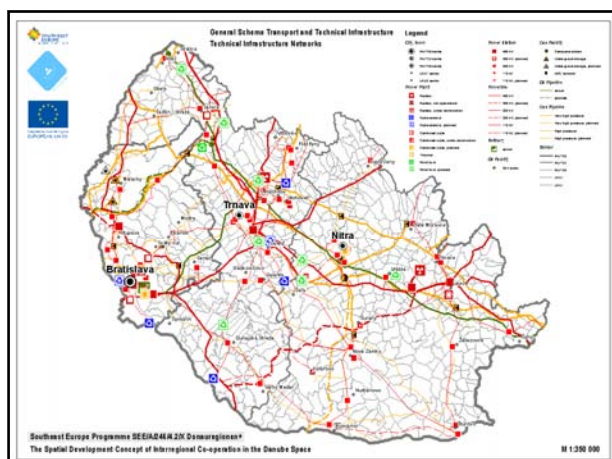
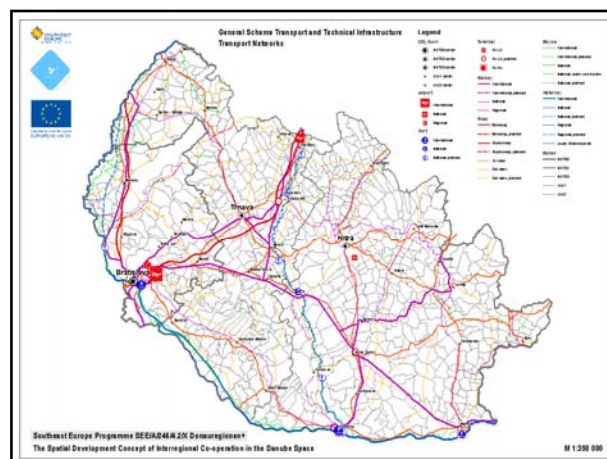
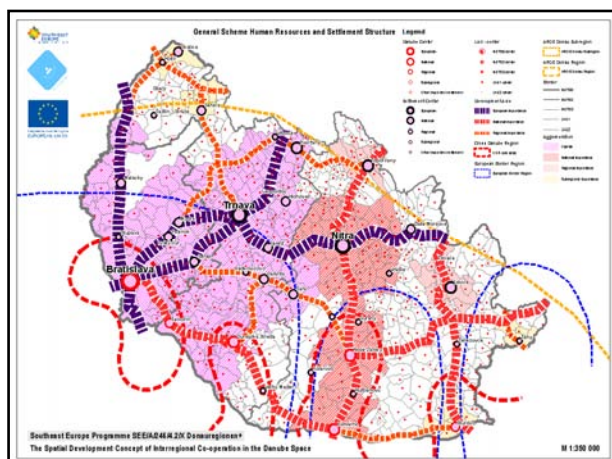
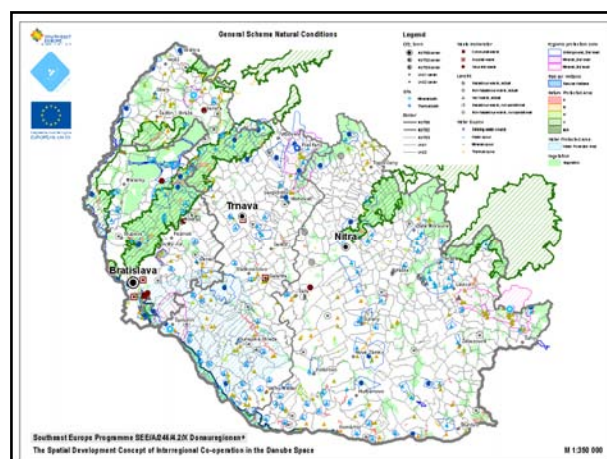
## Maps and Work packages

- **WP4 & WP5** – Common set of maps for each NUTS3 region (up to 200 maps)
- **WP6** – Set of maps for each CDR (up to 40 maps)
- **WP7** – Set of maps for ArgeDonauLander (5 maps)

- National Coordinate system / ETRS 1989
- Scale from 1:200 000 up to 1:400 000
- Each NUTS3 region / Logical union of NUTS3 regions
- Format A2

Jointly for our common future

Workshop 9, Varna, 1. – 2.11.2011 7






Thank you for your attention  
and patience as well,

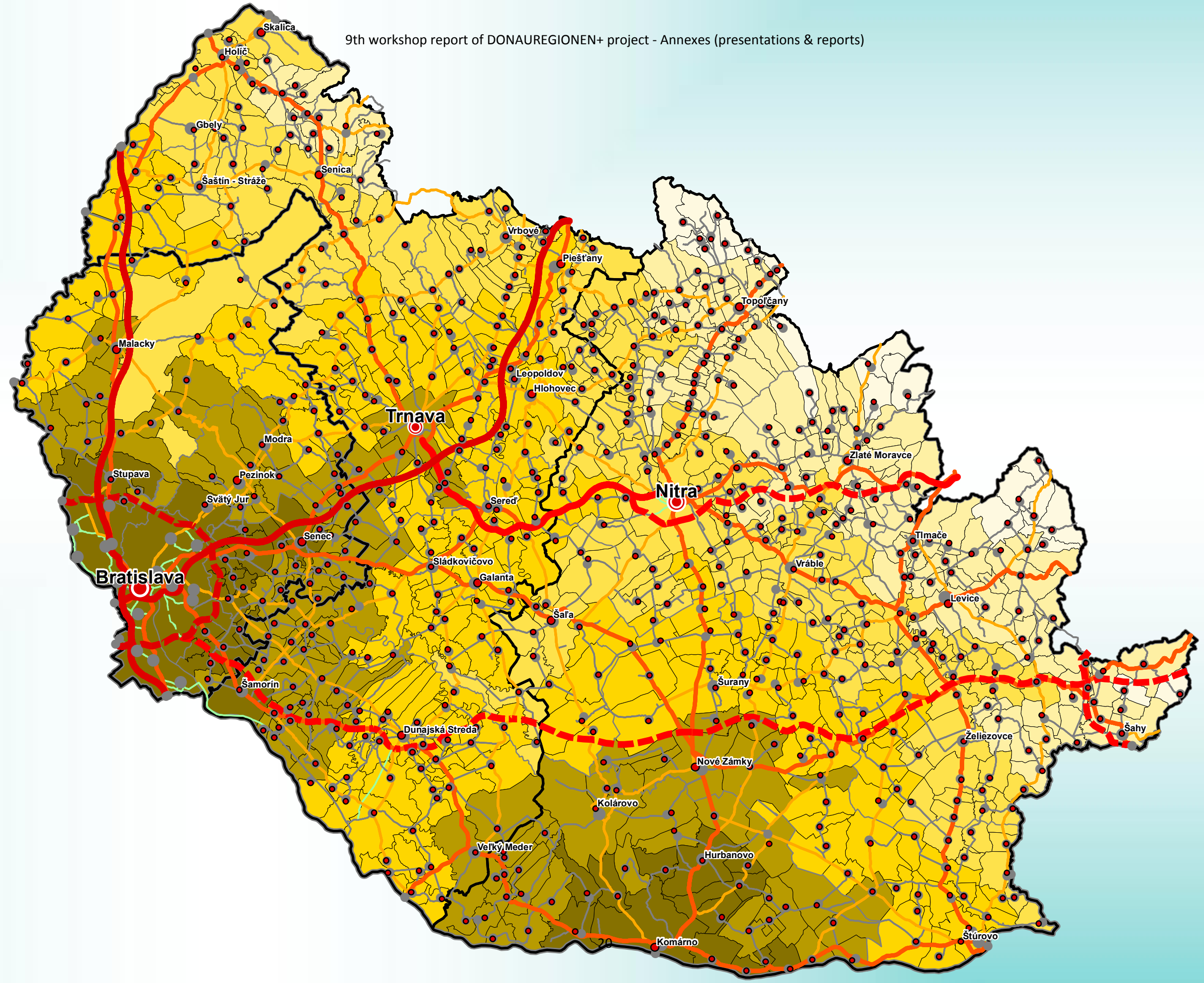
Have a nice day

Jointly for our common future

Workshop 9, Varna, 1. – 2.11.2011 12

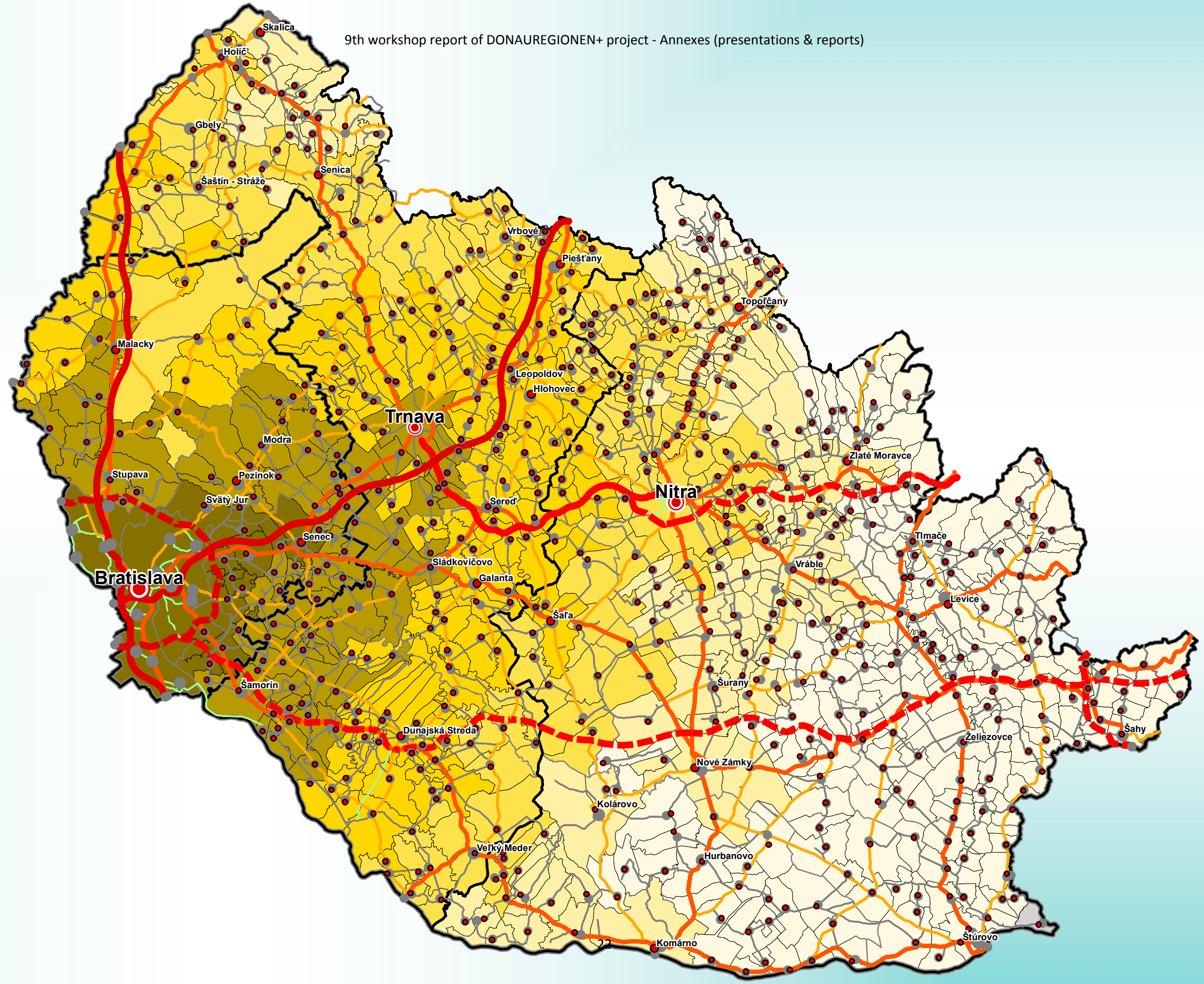
## C – WP3 – Accessibility Model





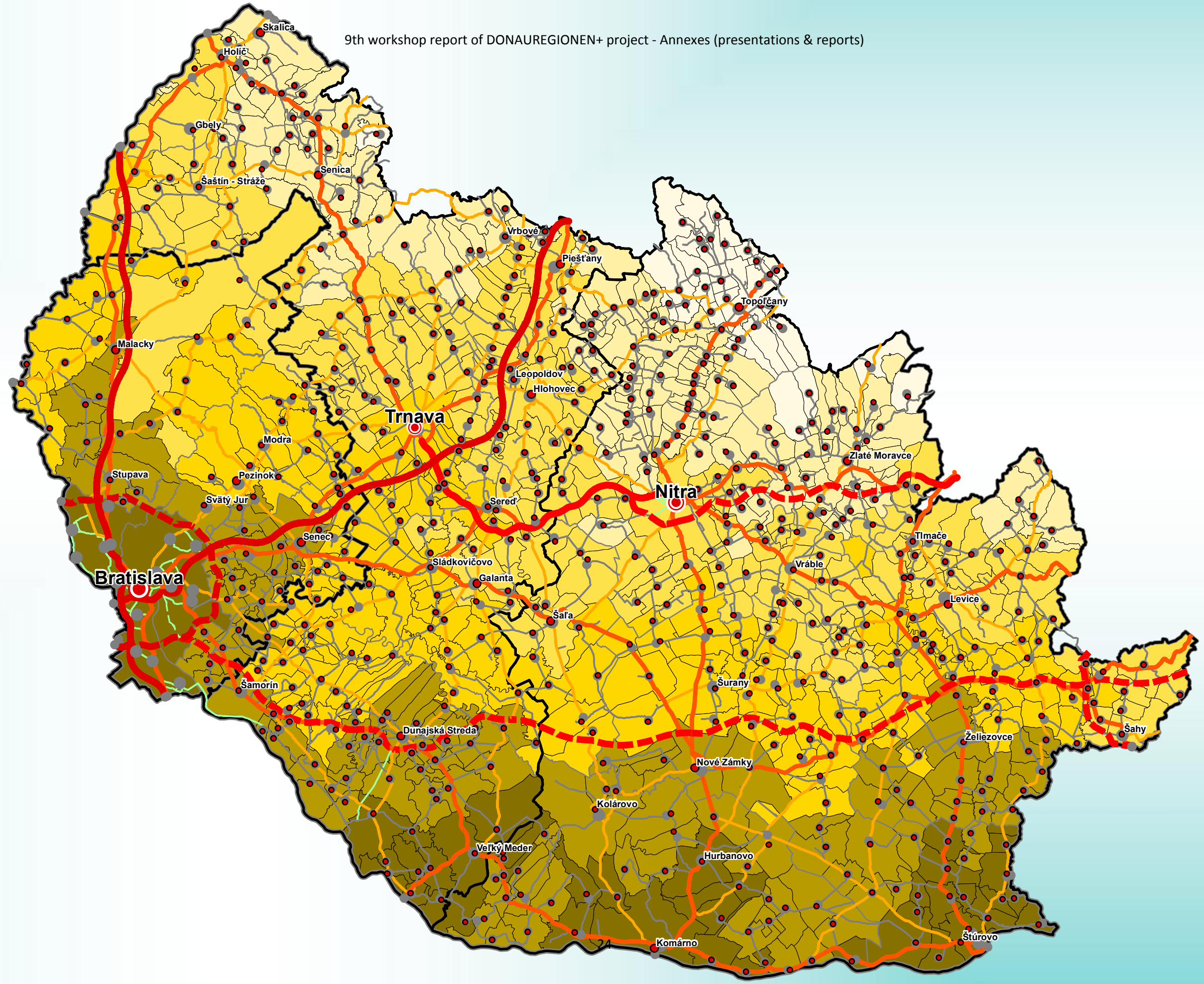
## C1 – WP3 – Accessibility Model – Airports







## C2 – WP3 – Accessibility Model – Border Crossing Time









### C3 – WP3 – Accessibility Model – Ports Time Accessibility

## WP3 – Accessibility Model

Ing. arch. Aleš Baláži



Workshop 9, Varna, 1. – 2.11.2011

## Basic parts of model

- **Inputs** – settlement structure (LAU2) and road network
- **Model** – definition of sources and targets in GIS
- **Calculation** – accessibility according time/distance
- **Outputs** – tables and maps of LAU2 accesibilities



Workshop 9, Varna, 1. – 2.11.2011

## Topology of road network

- **Oriented graph of lines / road sections and nodes / crossroads**
- **Regular node** – connection of 3 or road sections
- **Pseudo node** – connection of 2 road sections
- **Dandle node** – simple node without connection to any other road section
- **Regular node** – centre of LAU2 unit and / or crossroad
- **Pseudo node** – centre of LAU2 unit or important change of road characteristics
- **Dandle node** – centre of LAU2 unit or physical end of road

Workshop 9, Varna, 1. – 2.11.2011

## Structure of road network model

- **Identification number of road section**
- **Label of road**
- **Class (M, E, 1., 2., 3. class, important city / local road)**
- **Number of lanes (2, 4, 6)**
- **Status quo (actual, under construction, planned / proposed)**
- **Label according UNECE (AGR, AGTC)**
- **Label according TEN-T (Pan-european corridor, Priority project)**
- **Length of road section**
- **Year of operation beginning / end**
- **Number of from and to node / LAU2 unit**
- **Average speed on road section**



Workshop 9, Varna, 1. – 2.11.2011

Table

Centrální soubor

ID	Shape	ID	ROAD	CLASS	LANES	STATUS_QUI	AGR	AGTC	TEN_T	YEAR_FROM	YEAR_TO	LENGTH	FNODE	INODE	LAU2F	LAU2T	SPEED
2127	Polyline	212	0000002	1	4	E				1970	2010	1237	971	1011	971	50415	80
2128	Polyline	212	0000002	1	4	E				1970	2010	1675	1011	1066	50418	1066	80
2129	Polyline	213	0000002	1	4	E				1970	2010	267	1066	1066	1066	1066	80
2130	Polyline	213	0000002	1	4	E				1970	2010	546	1066	1109	1066	1109	80
2131	Polyline	213	0000002	1	4	E				1970	2010	275	1109	1114	1109	1114	80
2132	Polyline	213	0000002	1	4	E				1970	2010	1250	1114	1134	1114	1134	80
2133	Polyline	213	0000002	1	4	E				1970	2010	413	1134	1143	1134	1143	80
2134	Polyline	213	0000002	1	4	E				1970	2010	1677	1143	1184	1143	1184	80
2135	Polyline	213	0000002	1	4	E				1970	2010	2342	1184	1430	1184	1430	80
2136	Polyline	213	0000002	1	4	E	E65	C-E61	IV	1962	2006	776	1182	1209	1182	1209	80
2137	Polyline	213	0000002	1	4	E	E65	C-E61	IV	1962	2006	1214	1209	1275	1209	1275	80
2138	Polyline	213	0000002	1	2	E	E75	C-E63	V a	1962	2006	1046	1275	1318	1275	1318	80
2139	Polyline	214	0000002	1	2	E	E75	C-E63	V a	1962	2006	1071	1275	1326	1275	1326	80
2140	Polyline	214	0000002	1	2	E	E75	C-E63	V a	1962	2006	263	1318	1326	1318	1326	80
2141	Polyline	214	0000002	1	2	E				2007	2010	242	1066	1066	1066	1066	80
2142	Polyline	214	0000002	1	2	E				1973	2010	680	1066	1109	1066	1109	80
2143	Polyline	214	0000013	1	2	E				1970	2010	1276	1913	1917	1913	1917	80
2144	Polyline	214	0000013	1	2	E	E975			1970	2010	1360	1917	1925	1917	1925	80
2145	Polyline	214	0000013	1	2	E	E975			1970	2010	3301	1925	1940	1925	1940	80
2146	Polyline	214	0000013	1	2	E	E975			1970	2010	3030	1940	1957	1940	1957	80
2147	Polyline	214	0000013	1	2	E	E975			1970	2010	762	1957	1962	1957	1962	80
2148	Polyline	214	0000013	1	2	E	E975			1970	2010	1772	1962	1981	1962	1981	80
2149	Polyline	215	0000005	1	2	E				1970	2010	3444	5	14	70020	50439	80
2150	Polyline	215	0000005	1	2	E				1970	2010	1669	14	17	50439	17	80
2151	Polyline	215	0000005	1	2	E				1970	2010	1476	17	19	50439	19	80
2152	Polyline	215	0000005	1	2	E				1970	2010	46	19	20	50439	20	80
2153	Polyline	215	0000005	1	2	E				1970	2010	2065	20	22	50439	22	80
2154	Polyline	215	0000005	1	2	E				1970	2010	3073	22	25	50439	25	80
2155	Polyline	215	0000005	1	2	E				1970	2010	684	25	28	50439	28	80
2156	Polyline	215	0000005	1	2	E				1970	2010	919	28	34	50439	34	80
2157	Polyline	215	0000005	1	2	E				1970	2010	4150	34	39	50439	39	80
2158	Polyline	215	0000005	1	2	E				1970	2010	1187	39	43	50439	43	80
2159	Polyline	215	0000005	1	2	E				1970	2010	1906	43	52	50439	52	80
2160	Polyline	216	0000005	1	2	E				1970	2010	1040	52	60	50439	60	80
2161	Polyline	216	0000005	1	2	E				1970	2010	3823	60	60	50439	60	80
2162	Polyline	216	0000005	1	2	E				1970	2010	253	60	62	50439	62	80
2163	Polyline	216	0000005	1	2	E				1970	2010	723	62	65	50439	65	80
2164	Polyline	216	0000005	1	2	E				1970	2010	1196	65	64	50439	64	80
2165	Polyline	216	0000005	1	2	E				1970	2010	3036	64	117	50439	117	80
2166	Polyline	216	0000005	1	2	E				1970	2010	5036	117	152	50439	152	80
2167	Polyline	216	0000005	1	2	E				1970	2010	186	152	154	50439	154	80
2168	Polyline	216	0000005	1	2	E				1970	2010	431	154	160	50439	160	80
2169	Polyline	217	0000005	1	2	E				1970	2010	10667	160	208	50439	208	80




Workshop 9, Varna, 1. – 2.11.2011

## Accessibility Model

- **Accessibility of border crossing**
- **Accessibility of ports**
- **Accessibility of airports**
- **Delimitation of CDR core area**

Workshop 9, Varna, 1. – 2.11.2011



### **Samples of Accessibility model**

- Accesibility of border crossings – [WS9 TAM BC.pdf](#)
- Accesibility of ports – [WS9 TAM Ports.pdf](#)
- Accesibility of airports – [WS9 TAM Airport.pdf](#)

Jointly for our common future

Workshop 9, Varna, 1. – 2.11.2011

7



### **Thank you for your attention and patience as well, Have a nice day**

Jointly for our common future

Workshop 9, Varna, 1. – 2.11.2011

8

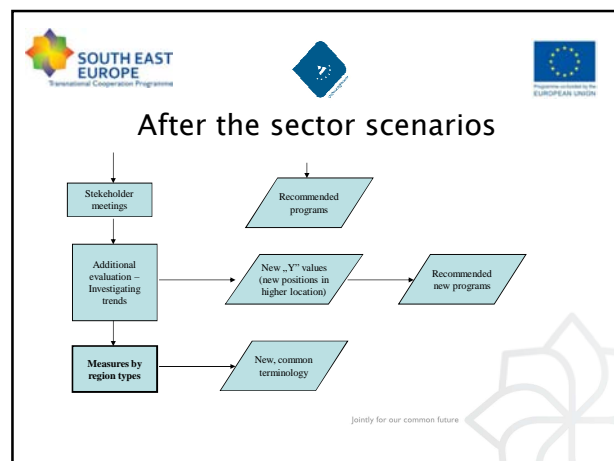
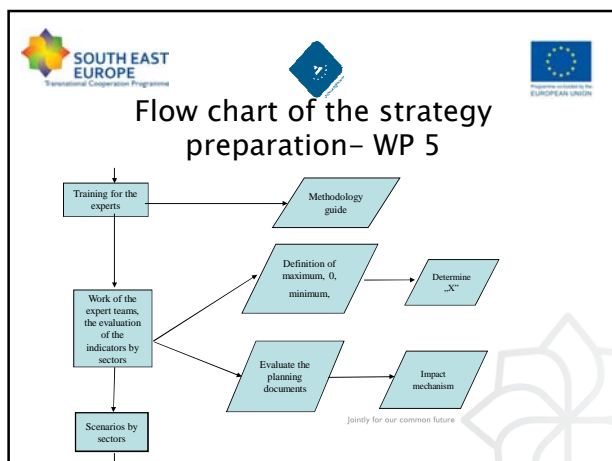
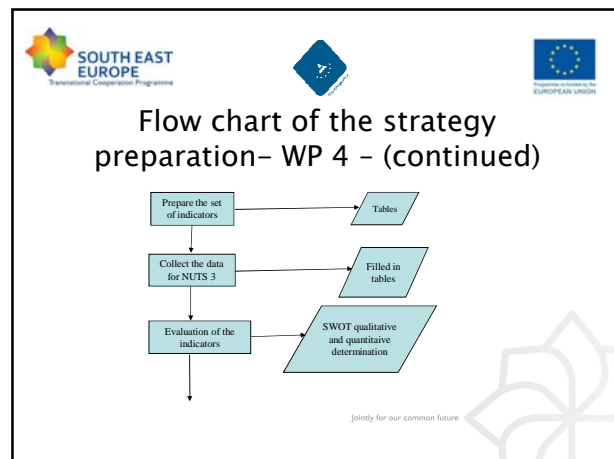
## D – WP5 – Present status

**WP 5 – PRESENT STATUS**

Dienes Tamás – SASD

Donauregionen +  
Varna workshop  
01 06 2011  
Bulgaria

*Jointly for our common future*



**At the moment – OK**

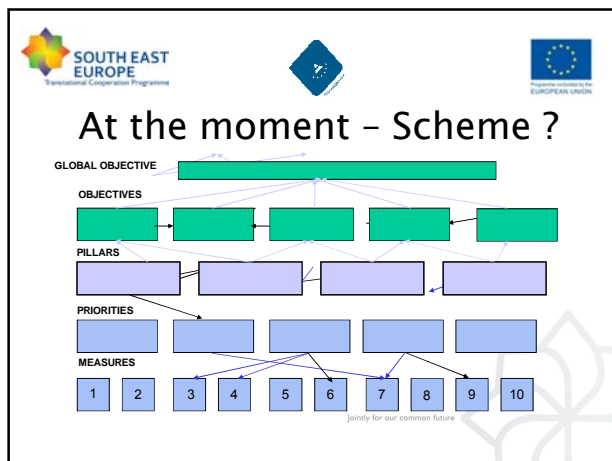
- 😊 Evaluation of indicators – everybody has finished
- 😊 Document analysis for all of the NUTS 3 regions – everybody has finished
- 😊 Identifying the key measures for all NUTS 3 regions – everybody has finished

*Jointly for our common future*

**At the moment – ?**

- ? Recommendations for new measures from experts
- ? SWOT (sectoral) for all NUTS 3 regions
- ? Sectoral evaluation (text) for all NUTS 3 r., scenarios
- ? Stakeholder meetings
- ? Synergies of the measures

*Jointly for our common future*



Thanks for your attention!

Jointly for our common future

## E – WP6 - Present Status, Goals and WG Organizations



**WP6 – Present Status, Workshop Goals and WG Organisation (2)**

9<sup>th</sup> Workshop - of the DONAUREGIONEN+ project  
1<sup>st</sup> and 2<sup>nd</sup> June 2011  
Varna, Bulgaria

presented by: Ľubomír Macák

Jointly for our common future

**WP6 Presentation – Content**

- C&R from 8<sup>th</sup> workshop fulfillment
- Introduction (goals, schedule and area of interest)
- Premises/inputs and fulfillment
- Preliminary outputs (case study)
- Differences (WP6 vs. WP5 vs. WP4)
- Workshop tasks and organization

9<sup>th</sup> Workshop, Varna, 1<sup>st</sup> - 2<sup>nd</sup> June 2011

WP6 – Present Status, Workshop Goals and WG Organisation (2)

2

**WP6 - C&R From 8<sup>th</sup> Workshop Fulfillment**

23. 3rd CDS workshop for ASH subregion	✓ done
24. Final list of CDR	✓ done
25. Responsible partner nomination	✓ done
26. Identification of PP/PP's responsible for elaboration of maps	✗ extended
27. Elaboration of case study	✓ done
28. Preparation/putting the WP6 online forms	✗ extended
29. Elaboration of WP6 Guide, version (1.2)	✗ extended

9<sup>th</sup> Workshop, Varna, 1<sup>st</sup> - 2<sup>nd</sup> June 2011

WP6 – Present Status, Workshop Goals and WG Organisation (2)

3

**WP6 Area of Interest – (ARGE a CDR regions)**

ARGE Sub-ID	CDR Name	NOTED Name
1	Budapest - Mór - Nagymaros	Budapest
2	Česká Slavia - Gelná	Česká Slavia
3	Nová Zámky - Bratislava	Nová Zámky
4	Budapest - Dobruška - Vojvodina	Budapest
5	Budapest - Pécs	Budapest
6	Budapest - Bratislava - Vojvodina	Budapest

ARGE Subregion Austria – Slovakia - Hungary

9<sup>th</sup> Workshop, Varna, 1<sup>st</sup> - 2<sup>nd</sup> June 2011

WP6 – Present Status, Workshop Goals and WG Organisation (2)

4

**WP6 – Premises/Inputs and Fulfillment Status**

1. WP3 – Project data and GIS development	
1. Primary date (inevitable for indicators analysis elaboration) – fulfillment	1.1 in progress
2. WP4 – Analysis completion	
1. „Online“ forms - fulfillment	2.1 finished
3. WP5 – Sectoral strategy development	
1. „Online“ forms - fulfillment	3.1 in progress
4. WP6 – Cross-Danube Strategy development	
1. Setting up a regional partnership	4.1 in progress
2. Elaboration of methodology	4.2 finished
3. „Online“ forms - creation	4.3 finished
4. „Online“ forms - fulfillment	4.4 in progress

9<sup>th</sup> Workshop, Varna, 1<sup>st</sup> - 2<sup>nd</sup> June 2011

WP6 – Present Status, Workshop Goals and WG Organisation (2)

5

**WP6 Specific Objectives – Preliminary Outputs (1)**

- 1. Setting up a regional partnership**
  - „Cross-Danube Strategy Workshop“ (CDSW),
  - Regional and national workshops.
- 2. Elaboration of methodology**
  - Proposal of methodology - 4. project workshop (Budapest, Hungary, March 2010).
  - WP6 Guide (version 1.1) “ERDF”
  - PP1 – Institute of spatial planning) - 6. project workshop (Novi Sad, Serbia, September, 2010).

9<sup>th</sup> Workshop, Varna, 1<sup>st</sup> - 2<sup>nd</sup> June 2011

WP6 – Present Status, Workshop Goals and WG Organisation (2)

6

**WP6 Specific Objectives – Preliminary Outputs (2)**

1. Joint analytical describe of "cross-Danube" region - WP4  
- Identification and evaluation of measures and projects with Cross-Danube impacts from partner (s) region (s).

2. Joint prognoses  
- Identification and evaluation of measures and projects with Cross-Danube impacts from partner (s) region (s).

3. Joint summary (automated)  
- present status and prediction of indicators  
- recommendations for new measures adding.

4. Joint summary with supplements (automated)  
- present status and prediction of indicators comparison, recommendations for creation of strategy.

5. Joint concept of strategy

9th Workshop, Varna, 1st - 2nd June 2011  
WP6 – Present Status, Workshop Goals and WG Organisation (2)

**WP6 General Objective – Preliminary Output (1)**

1. Joint analytical describe of CDR region  
- Joint identification of the area of CDR  
- Joint analytical description within 4 GS  
- Joint identification of key stakeholders and key documents  
- Joint SWOT analysis of area of interest

9th Workshop, Varna, 1st - 2nd June 2011  
WP6 – Present Status, Workshop Goals and WG Organisation (2)

**WP6 General Objective – Preliminary Output (2)**

2. Joint prognoses (WP5, WP6)  
1.b Joint SWOT analysis (WP5)

9th Workshop, Varna, 1st - 2nd June 2011  
WP6 – Present Status, Workshop Goals and WG Organisation (2)

**WP6 Differences vs. WP6, WP5 and WP4 - Overview**

P.č.	Název	WP6	WP5	WP4
1.	Area of interest	Cross-danube region, ARGE region	NUTS3	NUTS3
2.	Outputs	1.a Joint description of area, 1.b Joint SWOT analysis, 2. Prognoses – measures evaluation, 3. Joint summary, 4. Joint summary with supplements, 5. Joint concept of the strategy	1.b SWOT analysis, 2. Prognoses – measures evaluation, 3. Summary, 4. Summary with supplements, 5. Concept of the strategy	1.a Description of area (without SWOT)
3.	"Online" form 2. Prognoses	Measures and projects with CD impacts from partner (s) region (s).	Measures and projects of area of interest.	
4.	Problems and risks	-Primary data fulfillment, -Measures evaluation (expert estimation), -Identification of relevant measures („C-D“ impact), -Online forms fulfillment (WP6, WP5 a WP4).	-Measures evaluation (expert estimation), -Online forms fulfillment.	-Online forms fulfillment (text and table part), -Data relevance.

9th Workshop, Varna, 1st - 2nd June 2011  
WP6 – Present Status, Workshop Goals and WG Organisation (2)

**WP6 Working Group Goals and Organisation (1)**

- Goals:
  - primary data/table fulfillment status,
  - proposed/updated WP6 online forms (1-6) presentation (especially online form for CDR Strategy elaboration),
    - (1) Joint CDR description (analytical part) – WP4 + SWOT analysis
    - (2) Joint Prognoses
    - (3) Joint summary
    - (4) Joint summary with supplements
    - (5) Joint concept of strategy (global objective, specific objectives, priority, groups of measures and measures/projects)
    - (6) Overviews (maps, tables, charts, figures...)
  - CDSW information and outputs,
  - final CDR responsible partner/person nomination (for each CDR),
  - case study example presentation,
  - discussion,
  - C&R proposal.

9th Workshop, Varna, 1st - 2nd June 2011  
WP6 – Present Status, Workshop Goals and WG Organisation (2)

**Thank you for your interest and attention !**

9th Workshop, Varna, 1st - 2nd June 2011  
WP6 – Present Status, Workshop Goals and WG Organisation (2)

**(1) CDR description (analysis)**

9th Workshop, Varna, 1st - 2nd June 2011

WP6 – Present Status, Workshop Goals and WG Organisation (2)

13

**(2) Prognoses**

WP6

Measures identification and evaluation

No.	Measure	Value min	Value max	Probability	Source	Add/Proposed measure

Source: documents in which relevant measures is in, respectively "Add", if "measure" is new proposed

Jointly for our common future

9th Workshop, Varna, 1st - 2nd June 2011

WP6 – Present Status, Workshop Goals and WG Organisation (2)

14

**(3) Summary**

9th Workshop, Varna, 1st - 2nd June 2011

WP6 – Present Status, Workshop Goals and WG Organisation (2)

15

**(4) Summary with supplements**

9th Workshop, Varna, 1st - 2nd June 2011

WP6 – Present Status, Workshop Goals and WG Organisation (2)

16

**(5) Strategy**

9th Workshop, Varna, 1st - 2nd June 2011

WP6 – Present Status, Workshop Goals and WG Organisation (2)

17

## F – Outputs and WP7

## WP7

Workshop Varna

## D+outputs

- Digital
- Printed

## Digital Outputs

- D+portal – web page on [www.donauregionen.net](http://www.donauregionen.net)
  - Info for public (events, reports)
- D+Web Server – alphanumeric data
- D+GIS Server – geografic data

## D+ Printed Outputs

- WP1 (methodology and terminology)
- WP2 – according the CAP
- WP3
- WP4 + WP5 – integrated
- WP6 –
- WP7 – integrated with a last phase of WP4 (compaative analysis)

## WPs Outputs

- WP4 – WP5 – level NUTS3
- WP6 – CDRs + Arge Donau Subregions (?)
- WP7 – Arge Donau region

## WP7 origin

- The last phase of WP5 – comprehensive strategy was defined as specific WP
- The scenarios will be done on two sources:
  - The results of WP4, WP5 and WP6
  - The national background reports

### NBRs – topdown approach

- Definition of external factors, which should be joined with NUTS3 based measures – how to do is still open,
- Each factor should be interpreted to the set of measures of specific DR (NUTS3)

### Buttom-up approach

- From WP4 we include here the results of comparative analysis
- Description of individual indicators – their changes from 1993 to 2020 extended by extrapolation till 2030 (?) will be elaborated
- The pesimistic and optimistic scenarios will be elaborated on the basis of the minimum and maximum values of indicators
- The realistic scenario will be done by expert on the results of pesimistic and optimistic scenarios